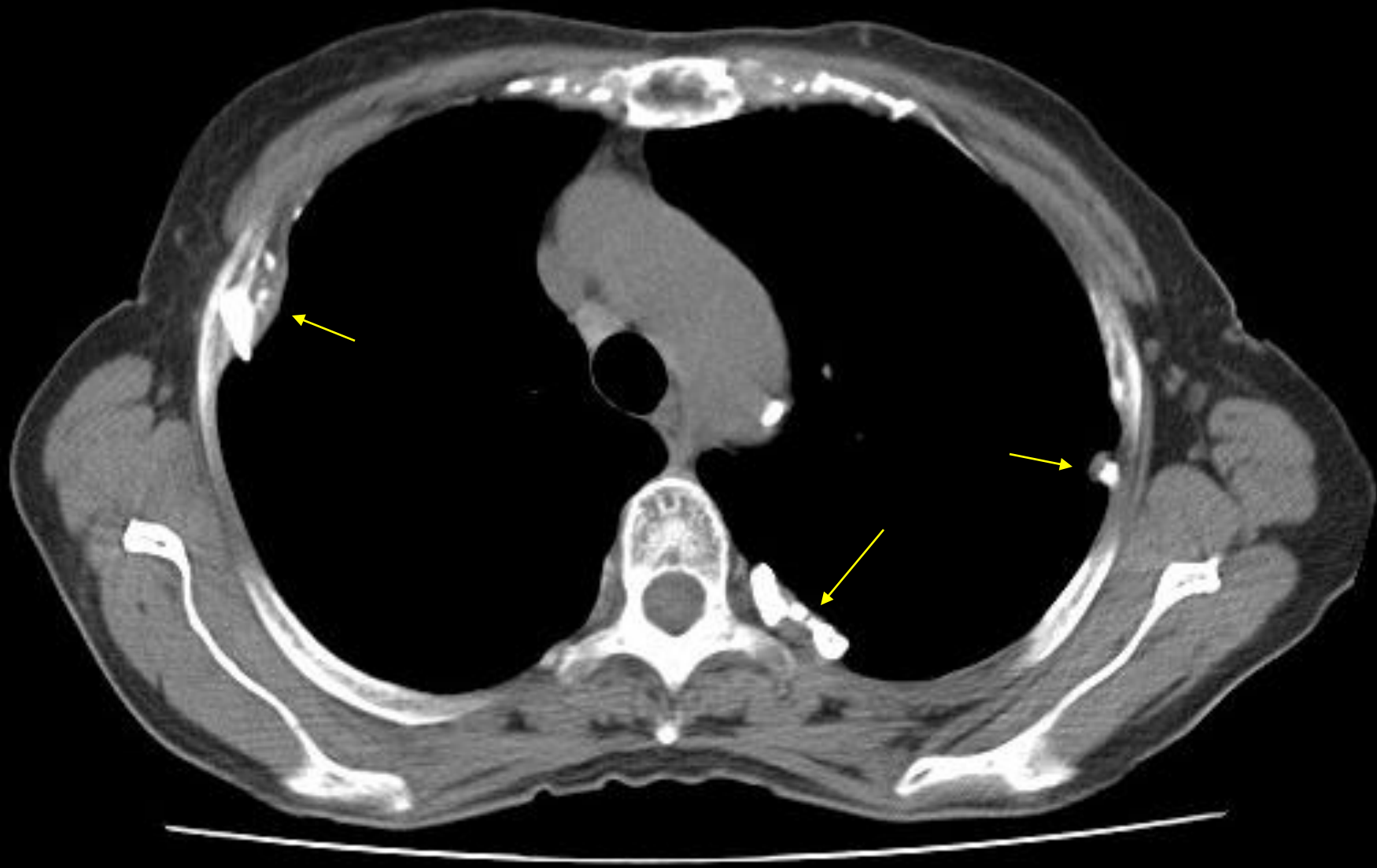
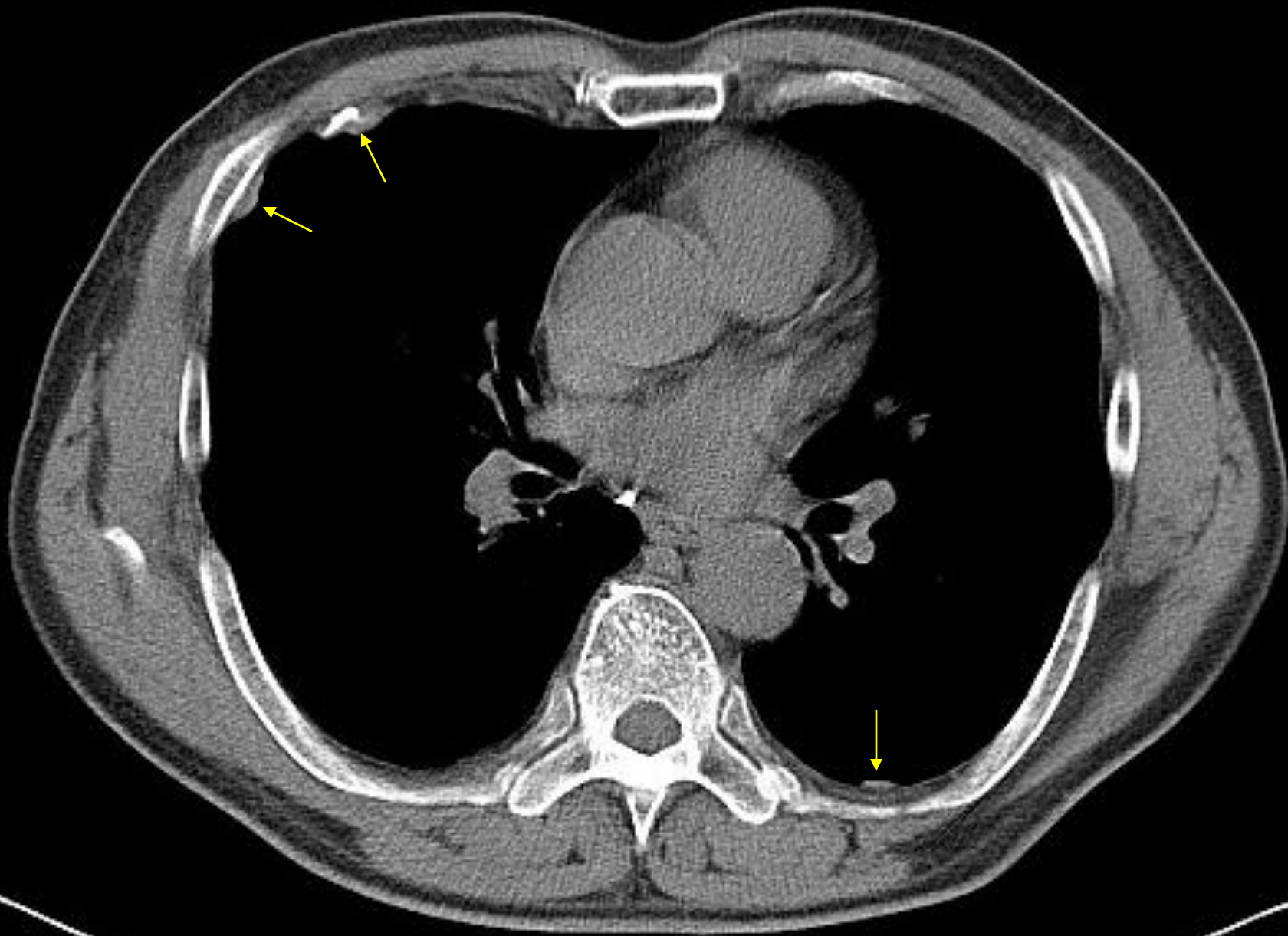
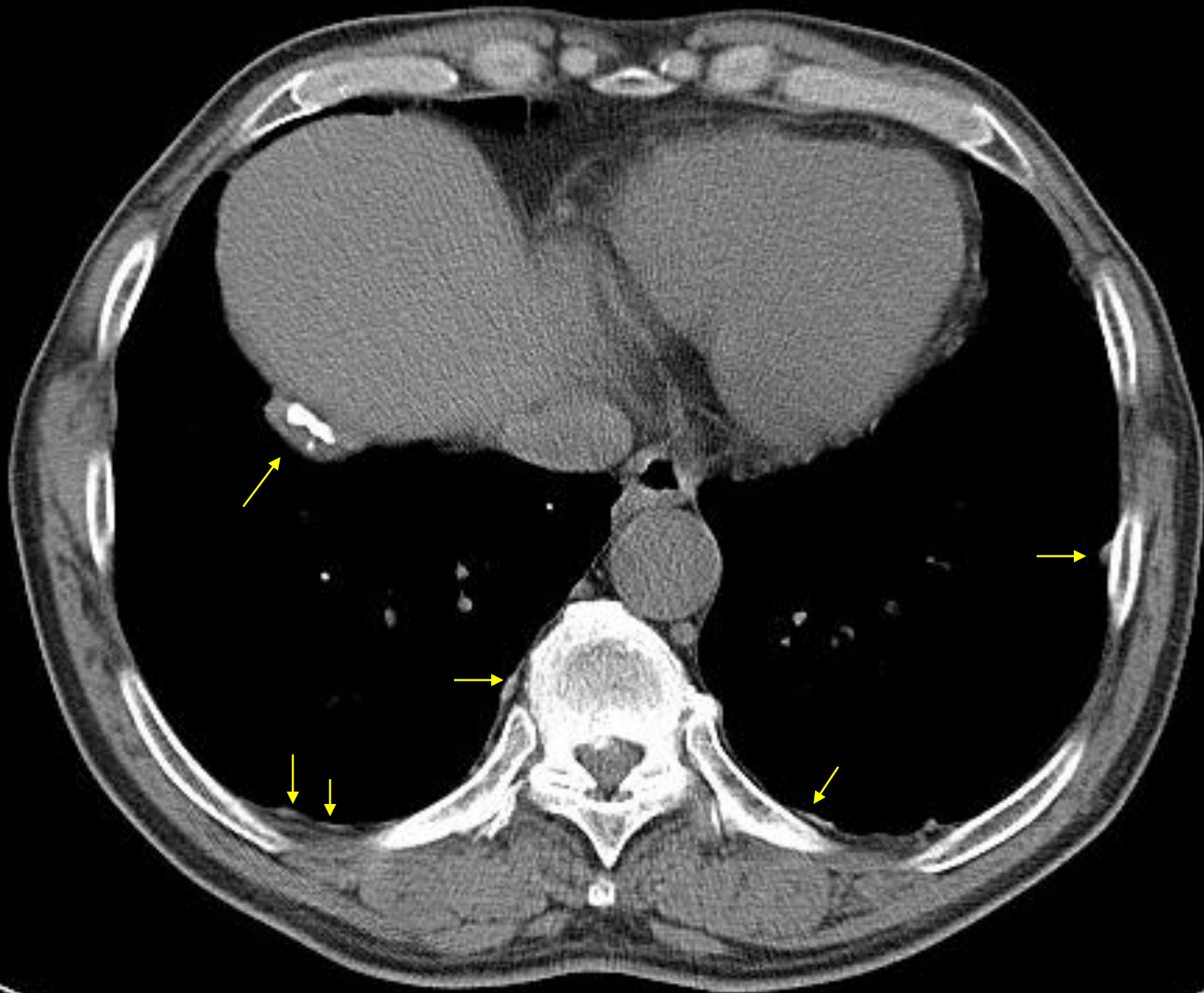


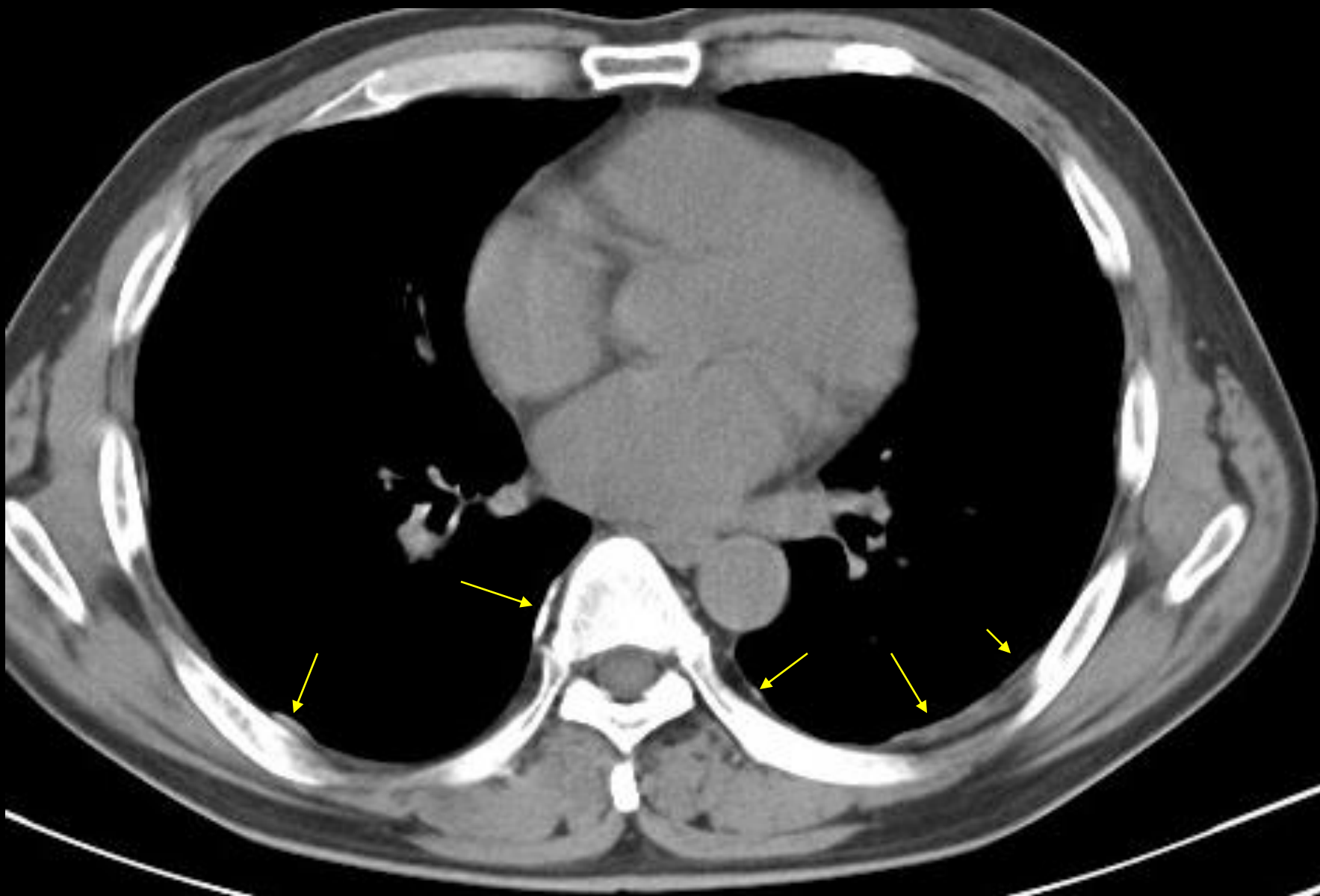
증례: Asbestos Plaque

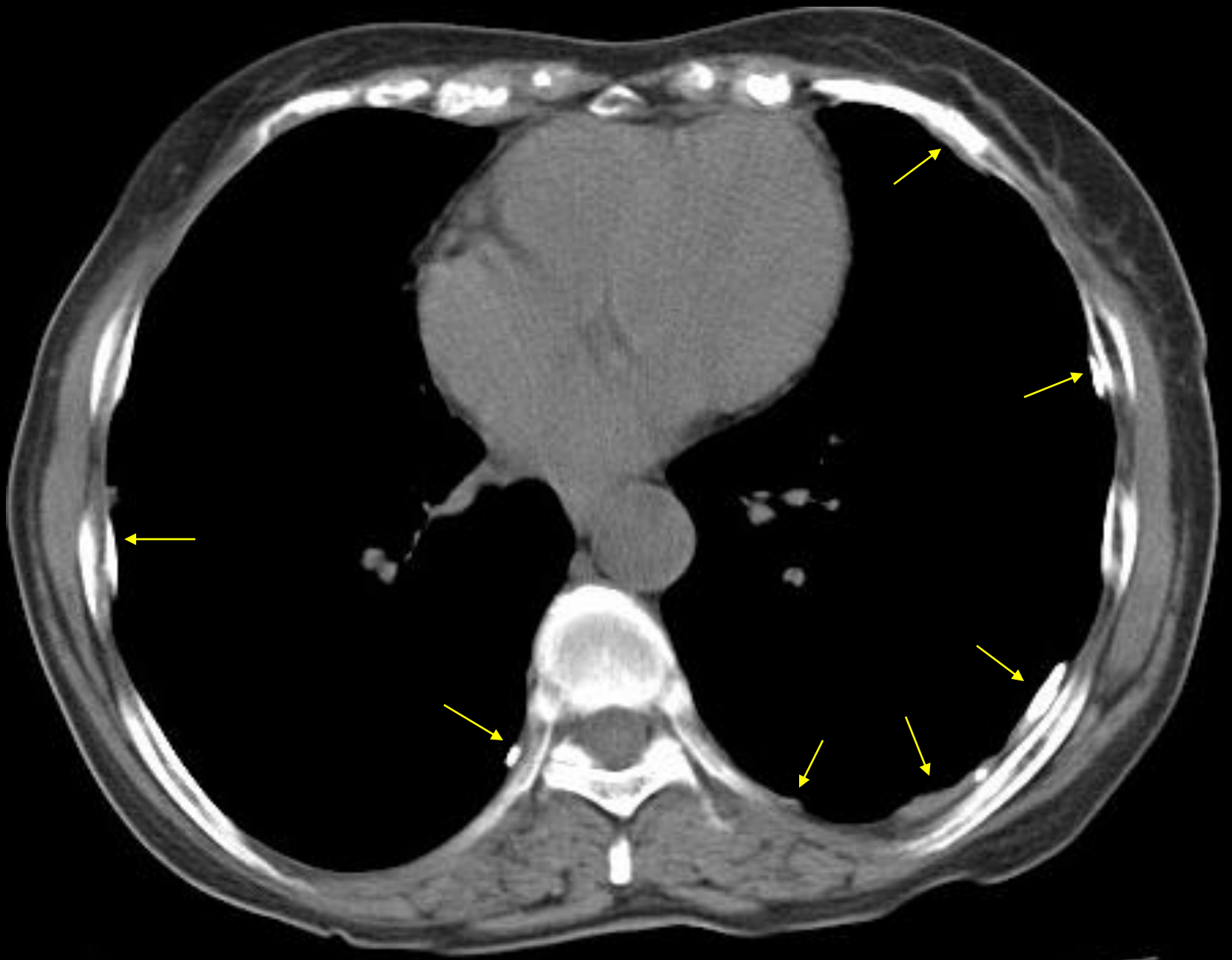
Calcified Plaques

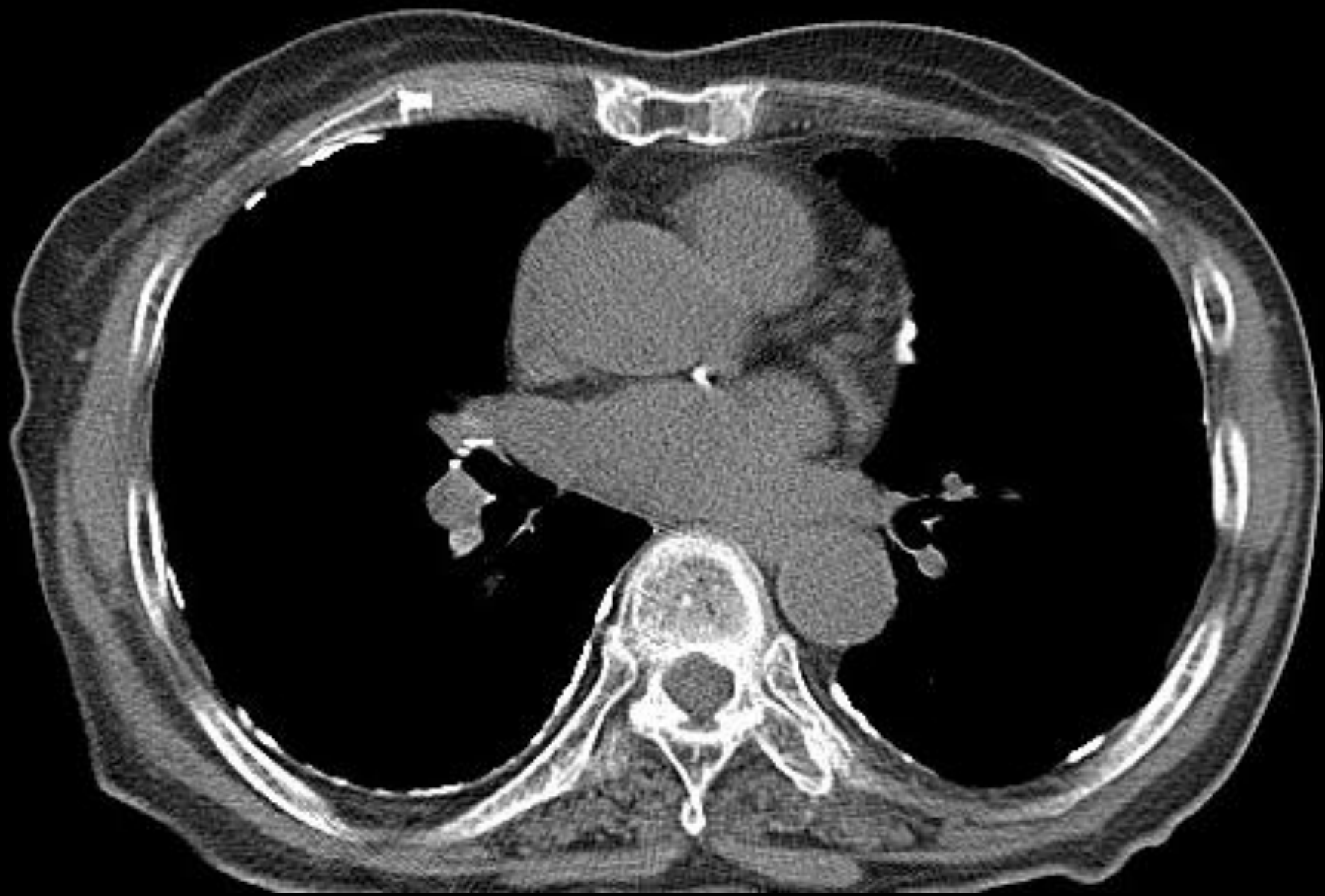




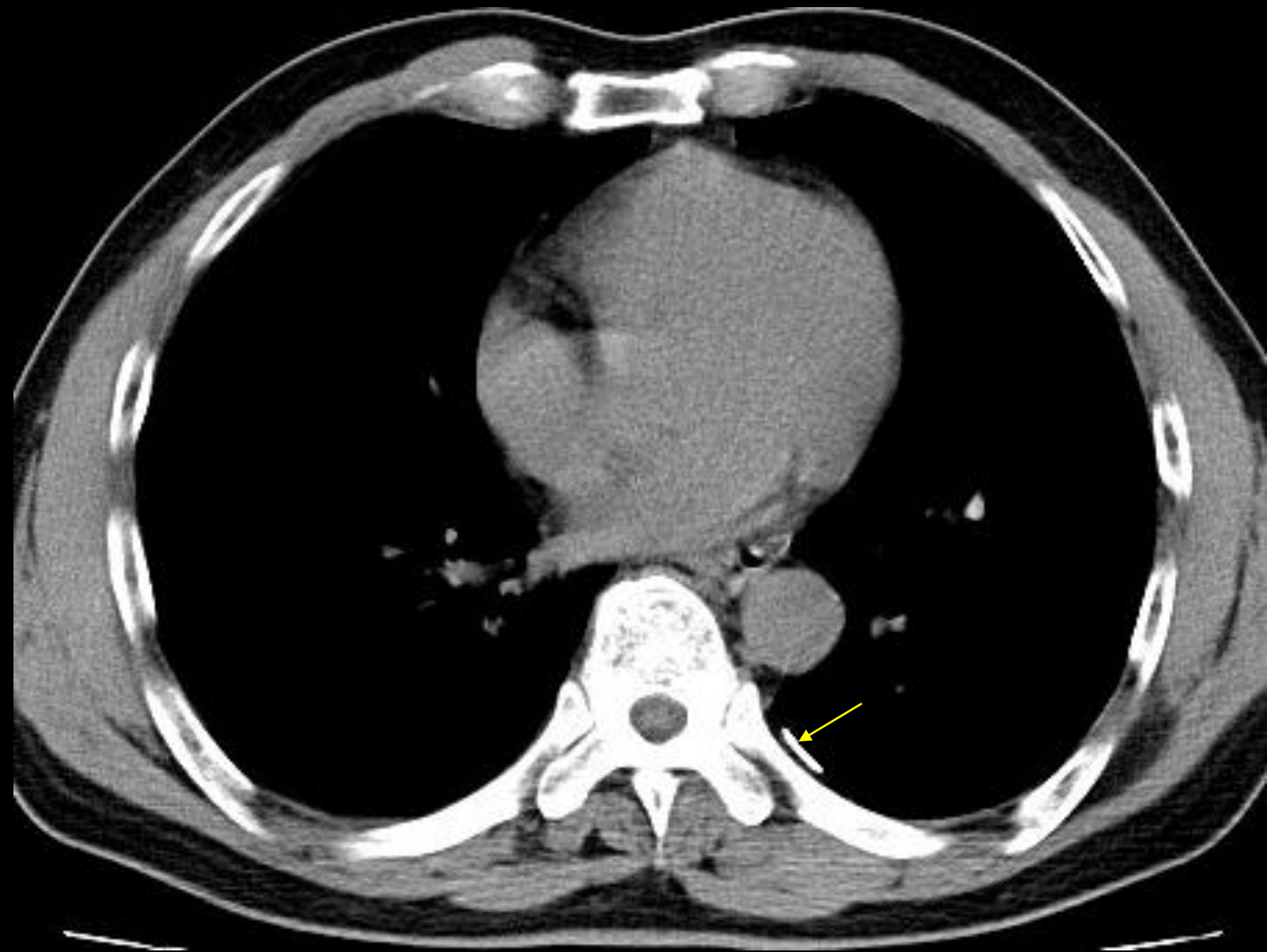


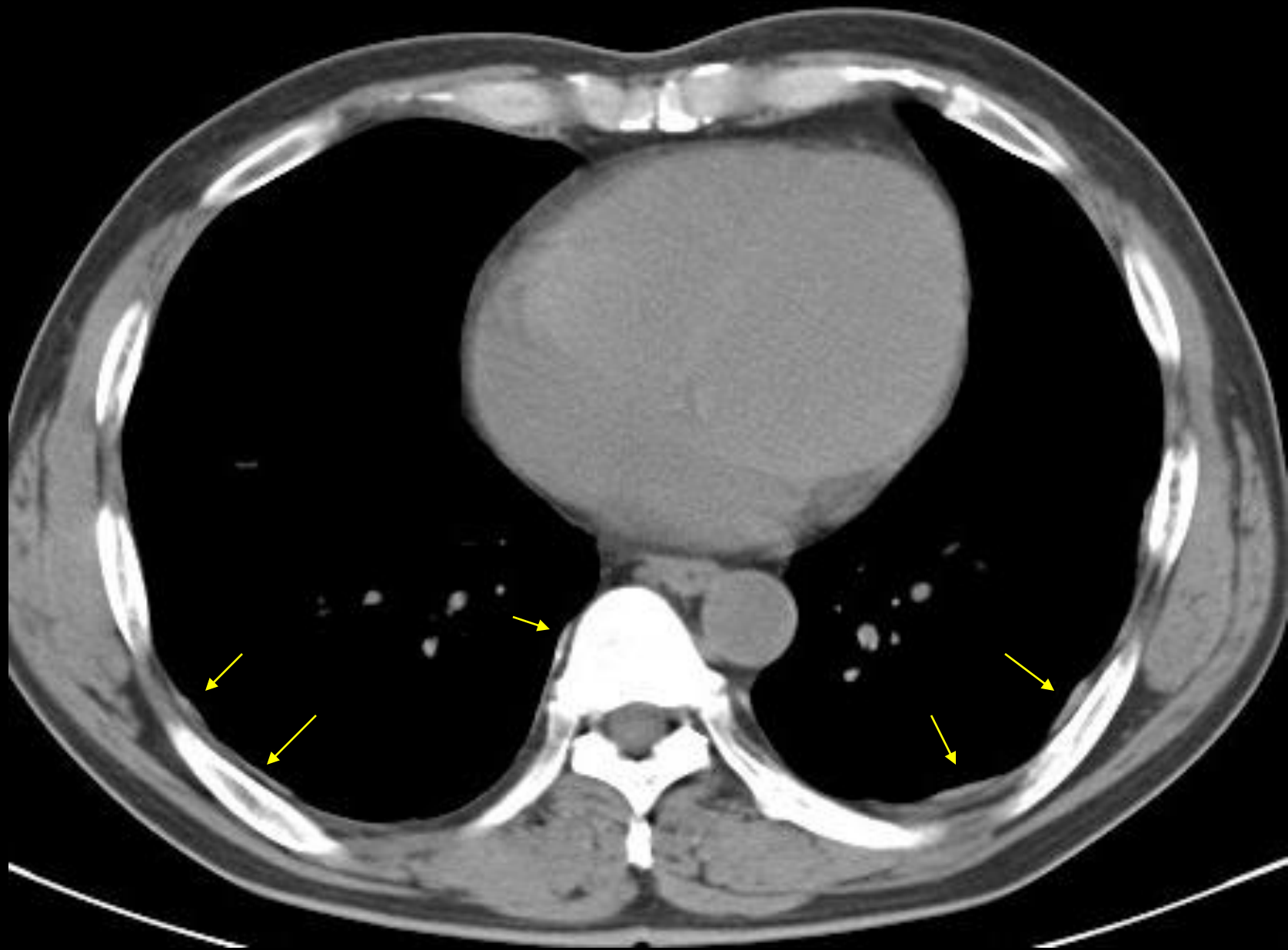




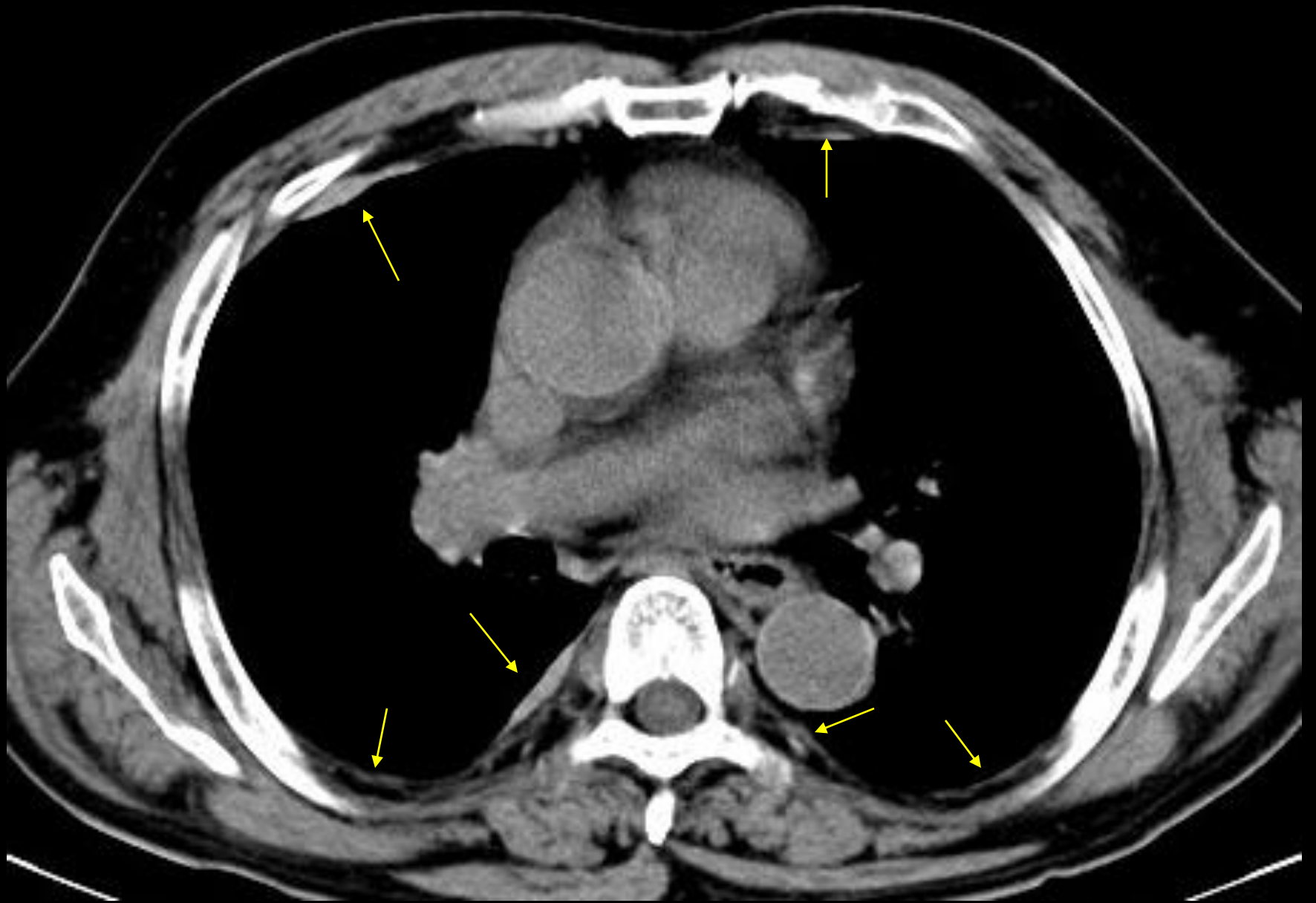


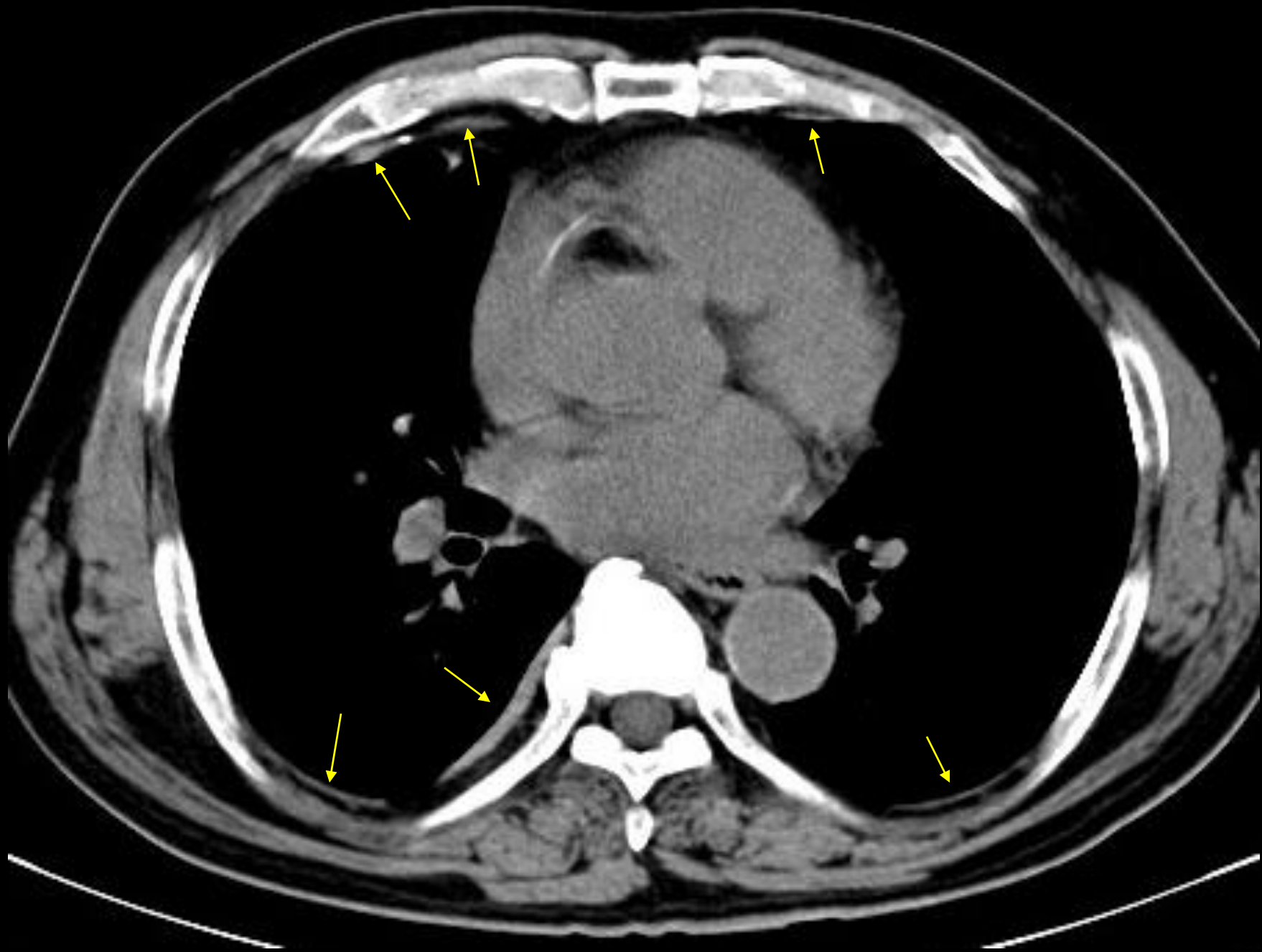


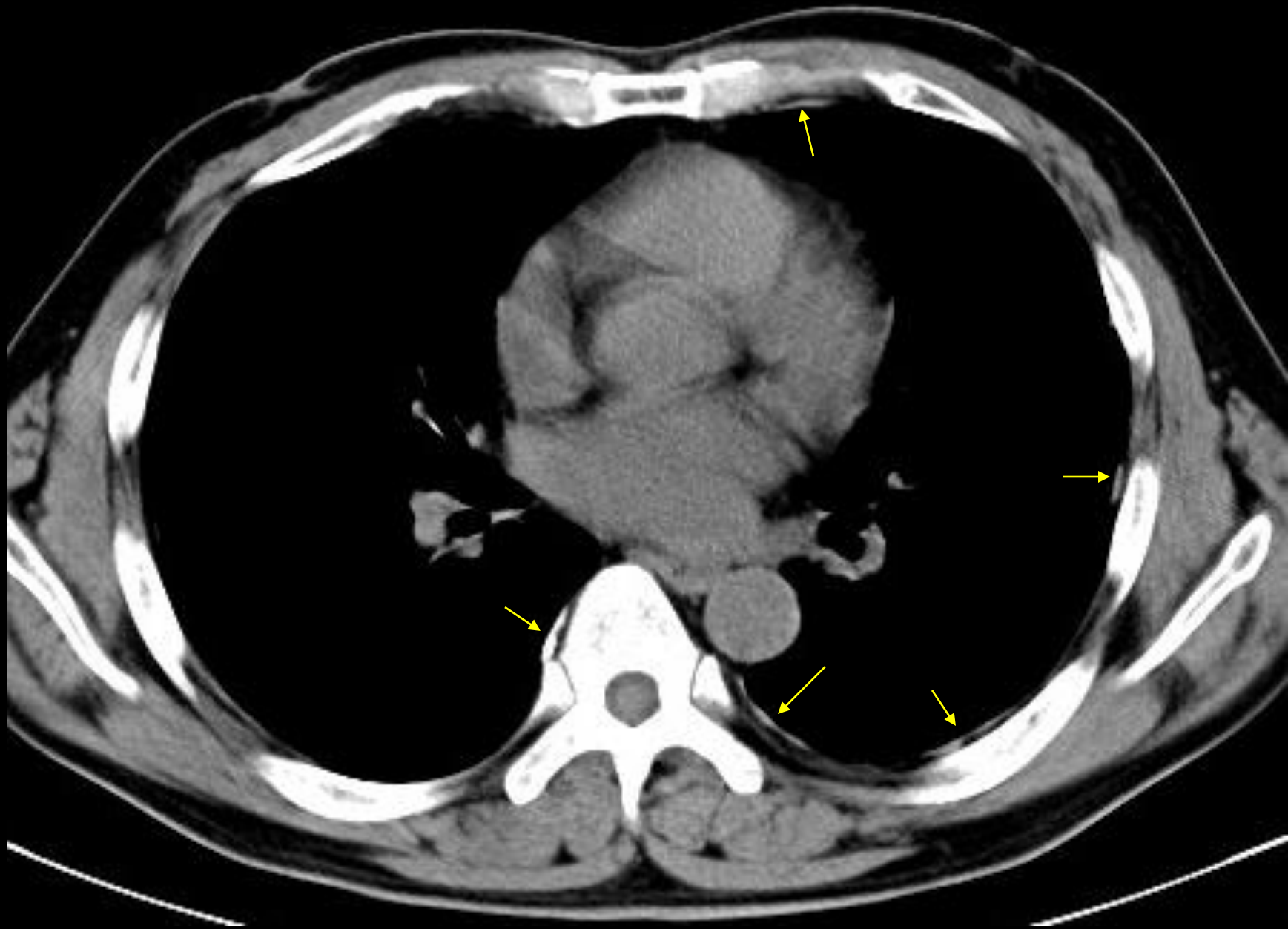


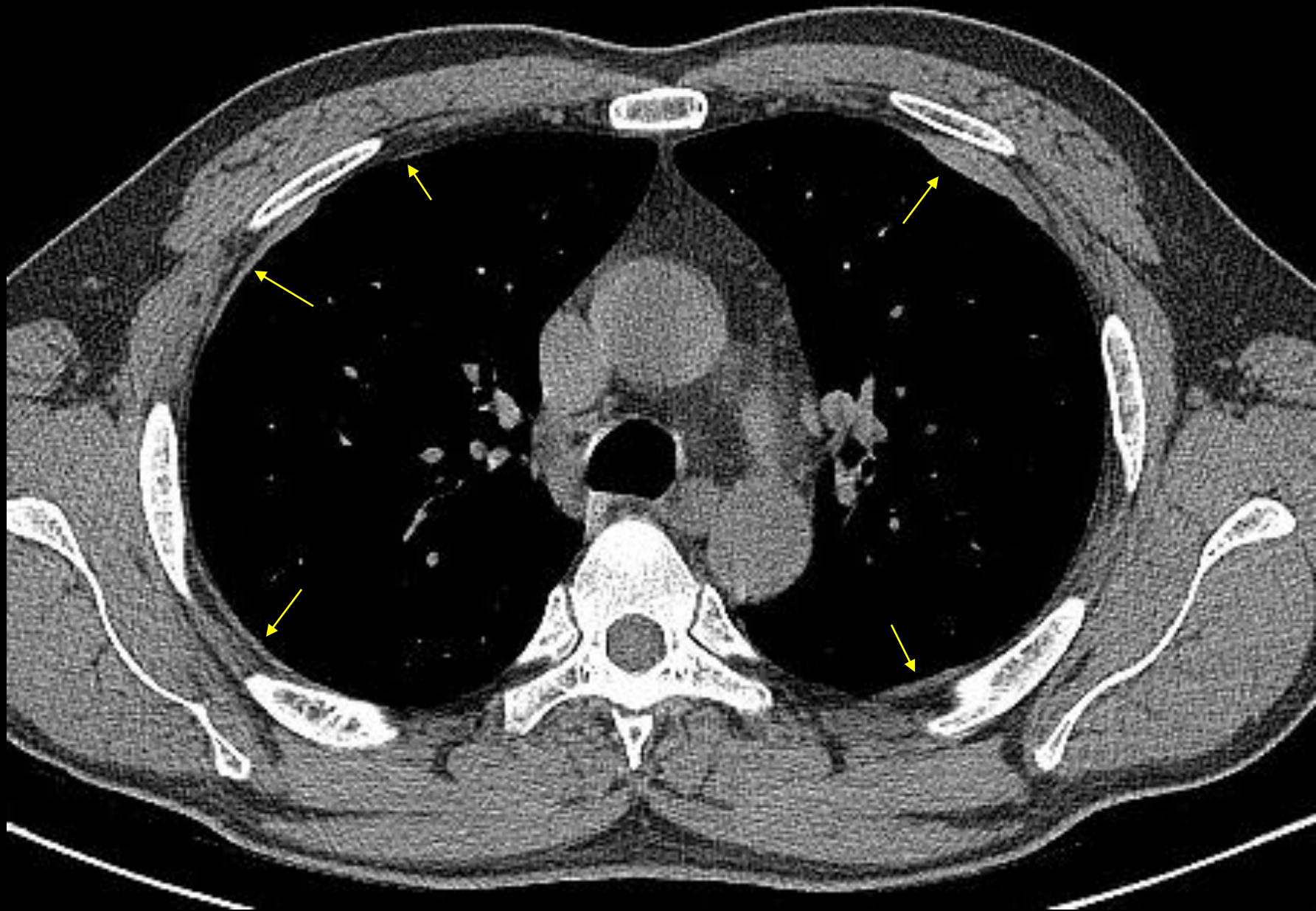


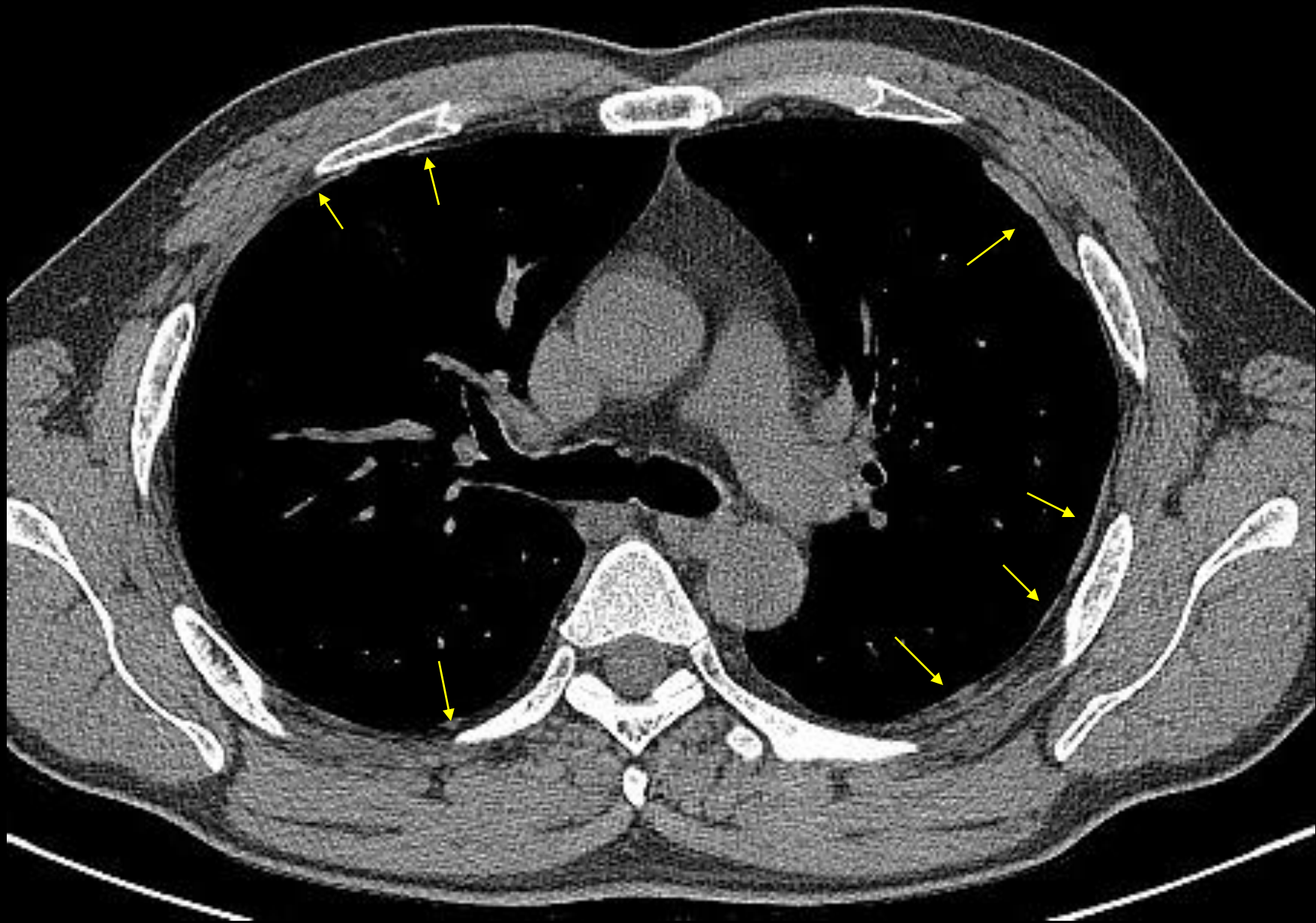
Noncalcified Plaques

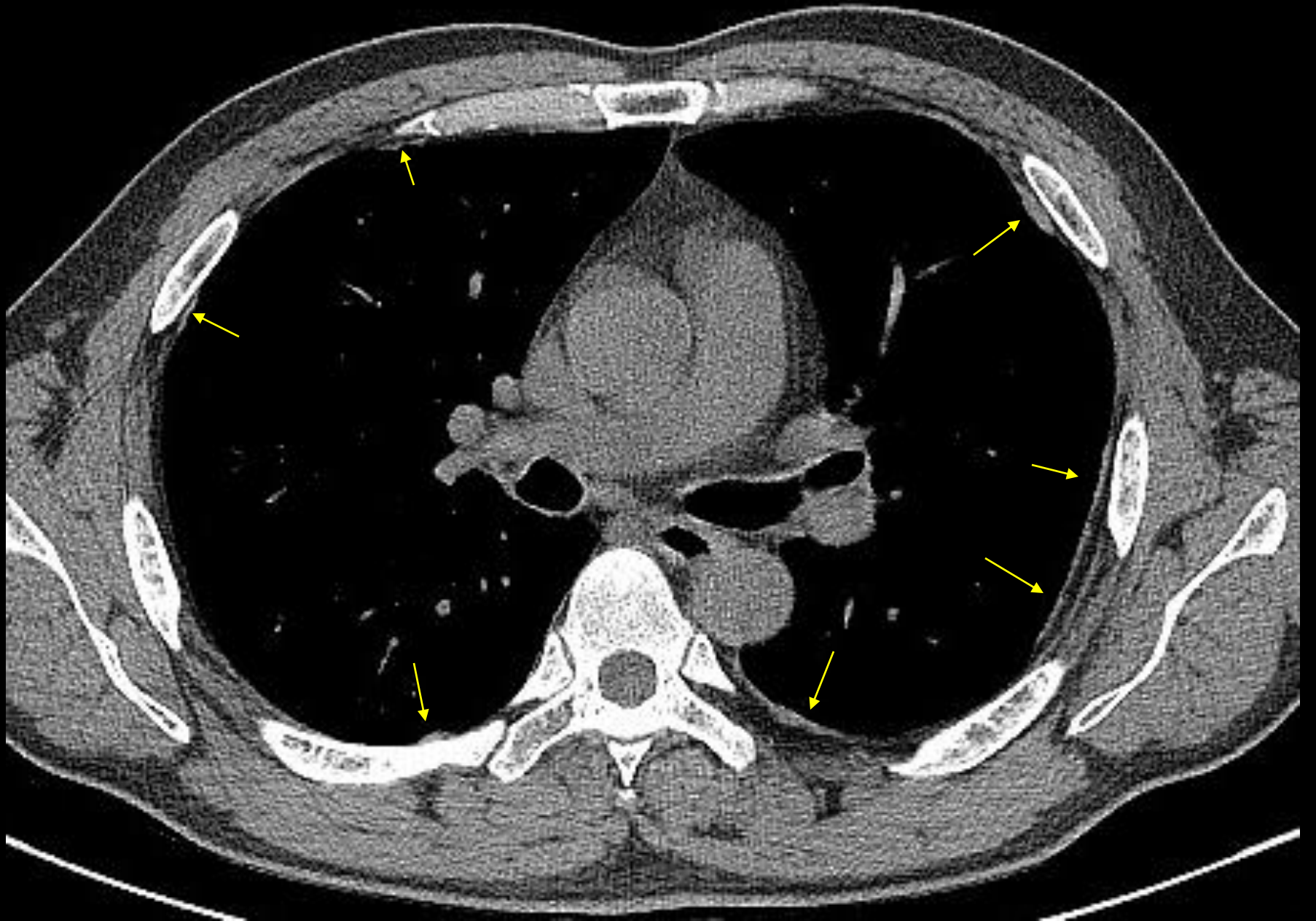


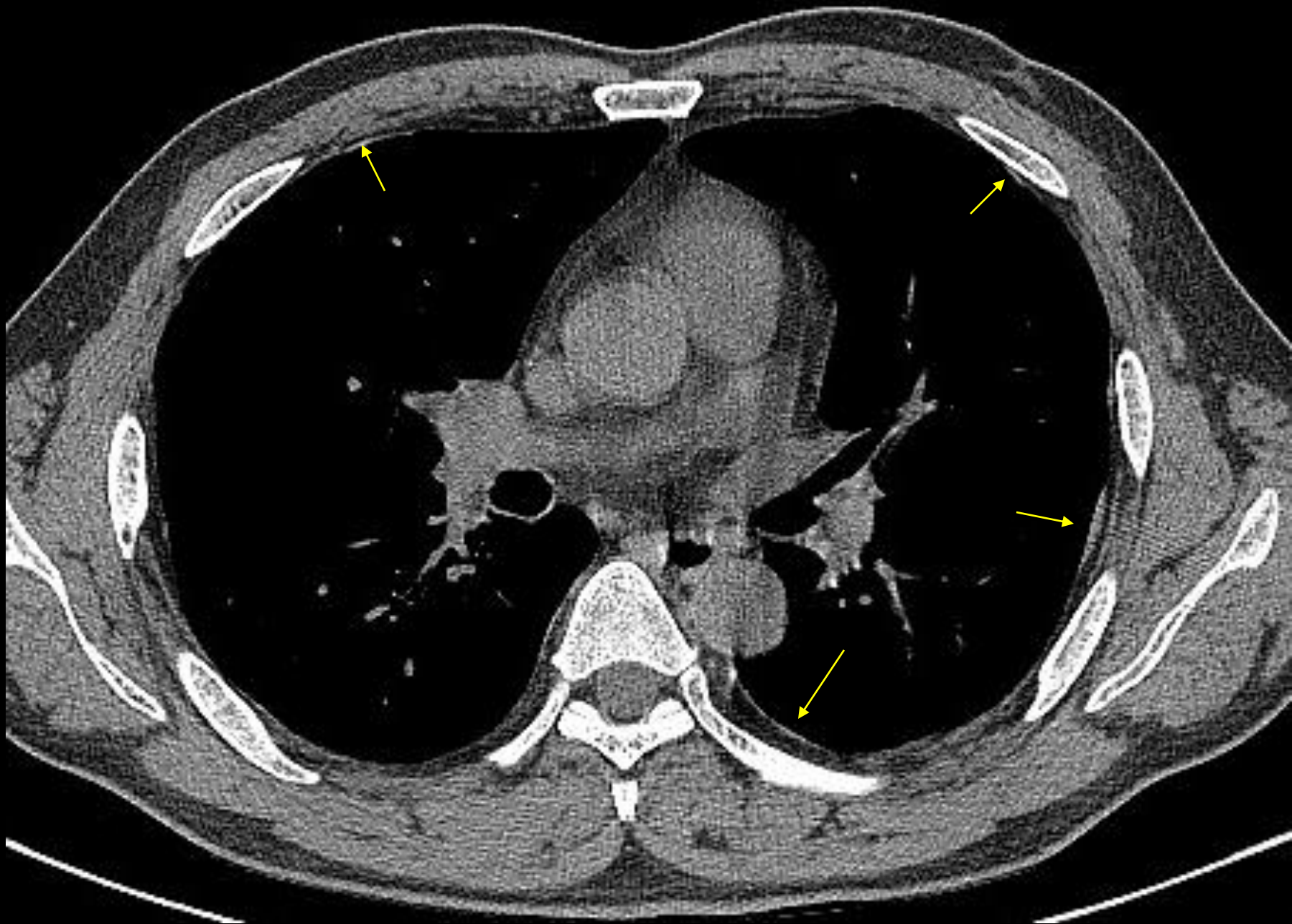


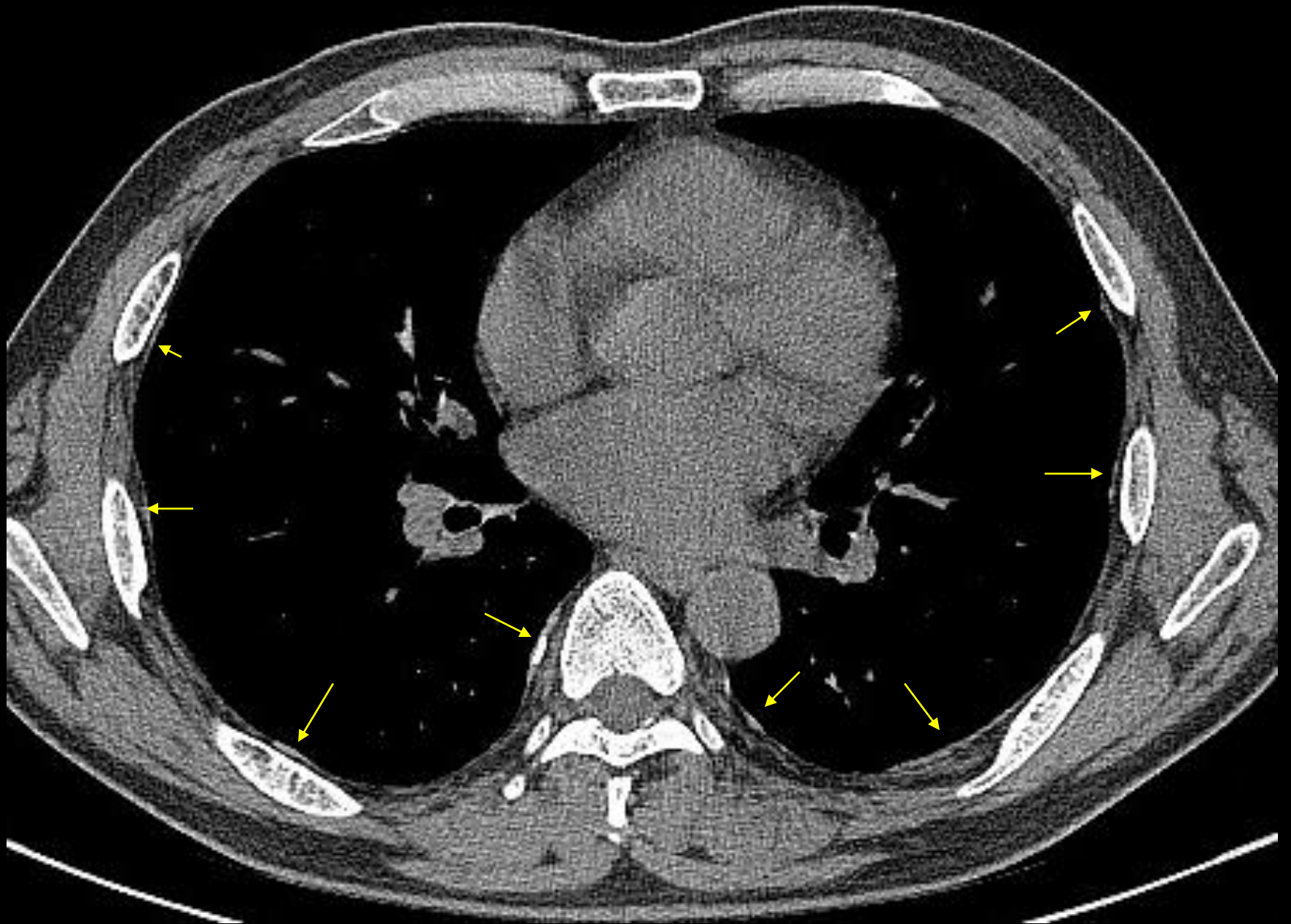




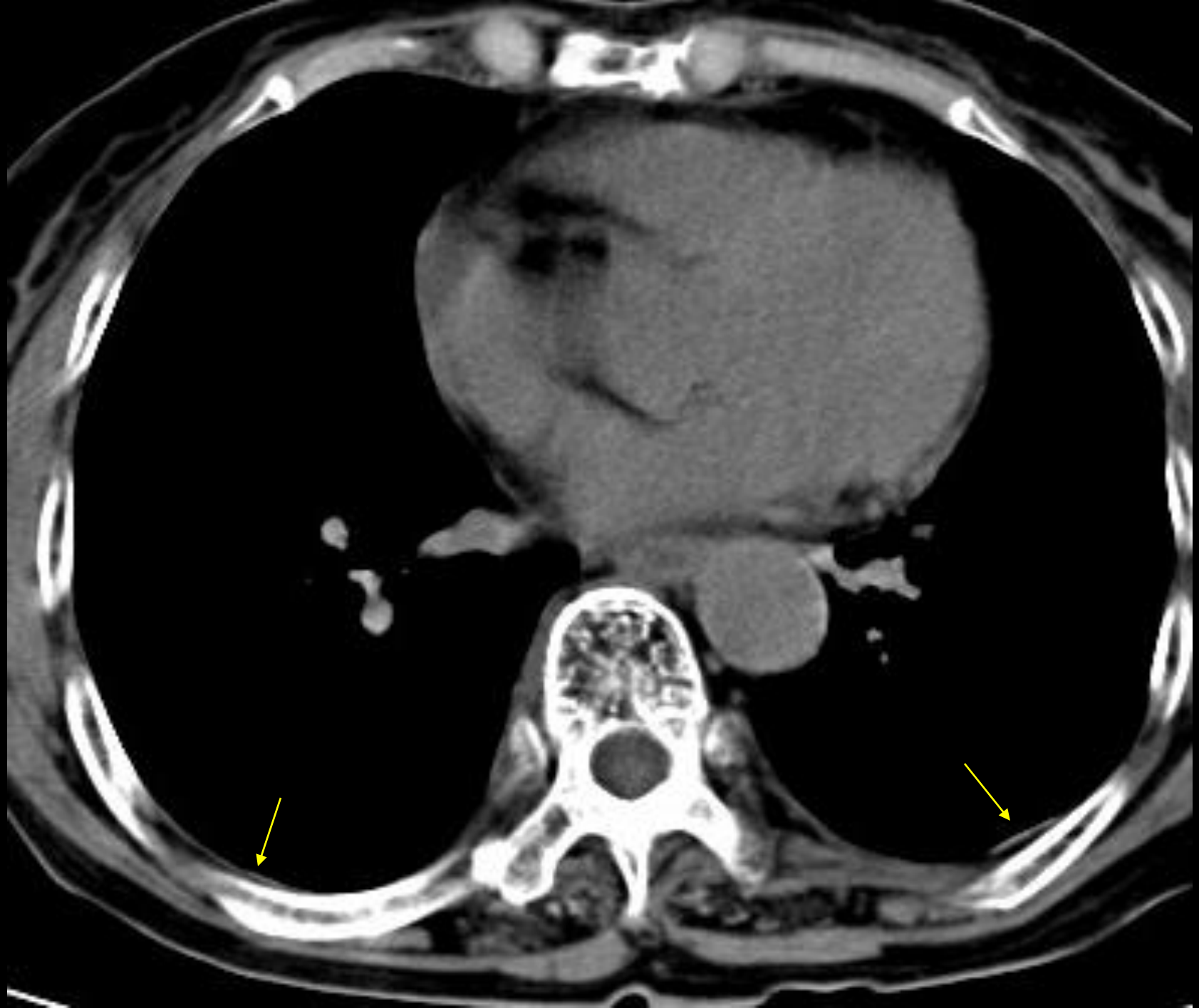


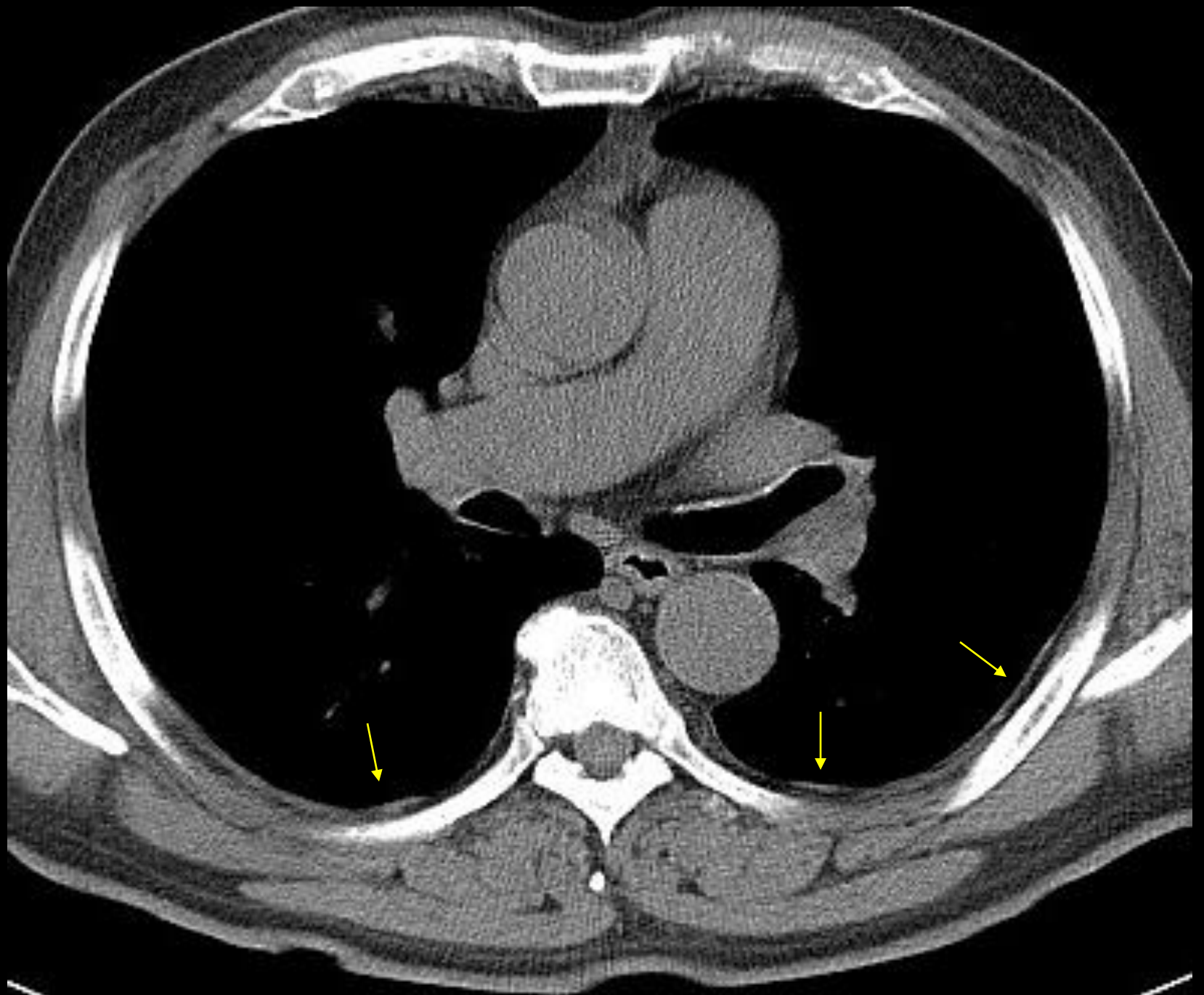


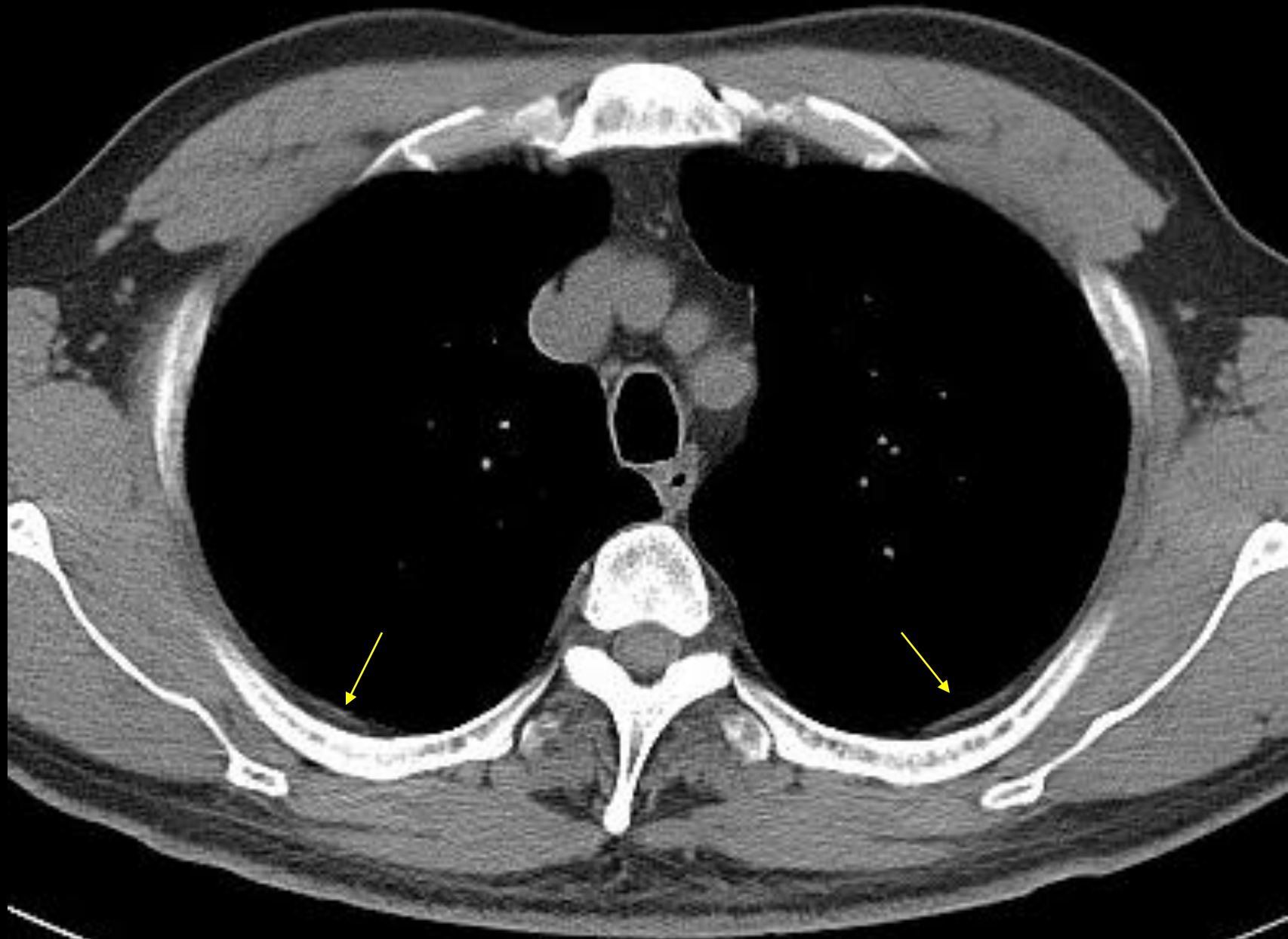


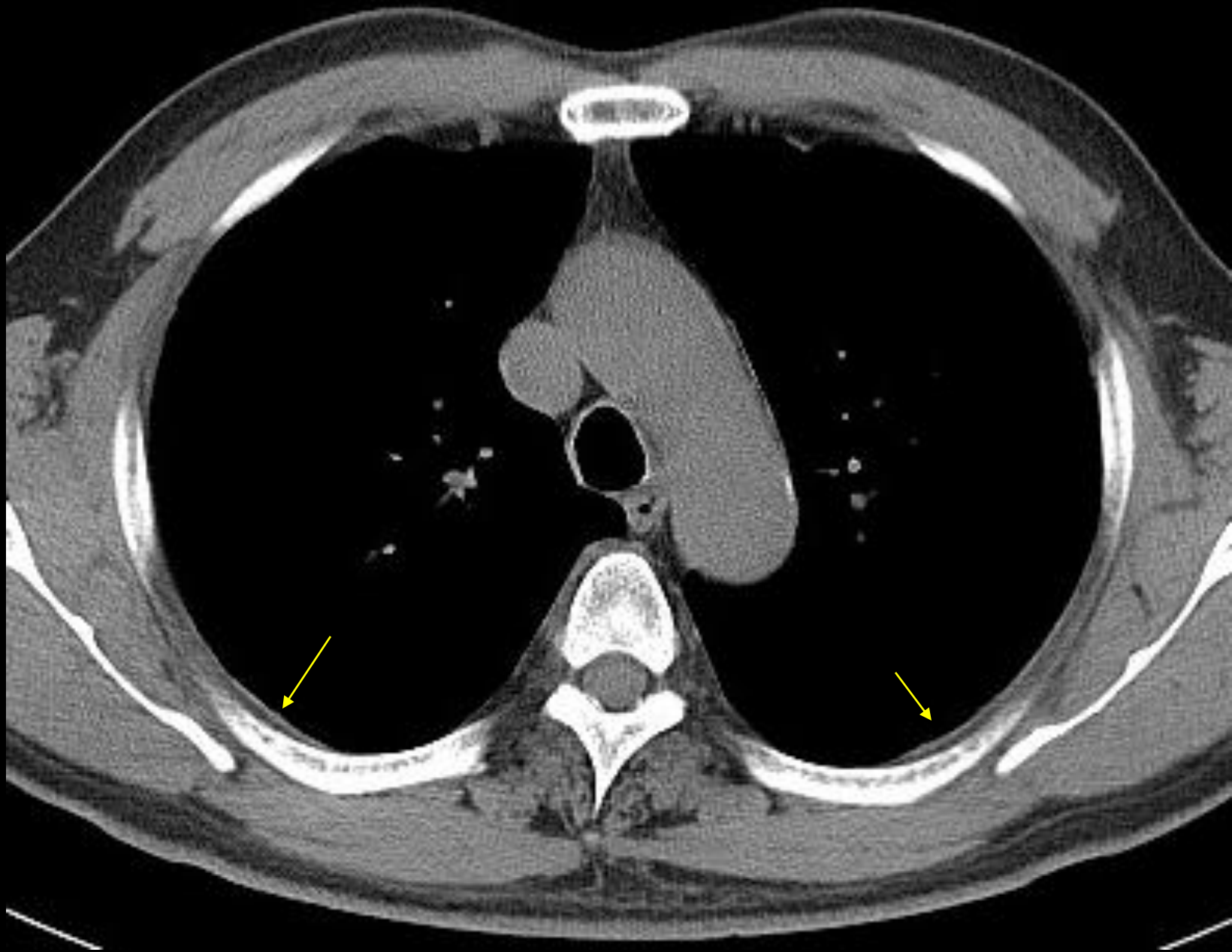


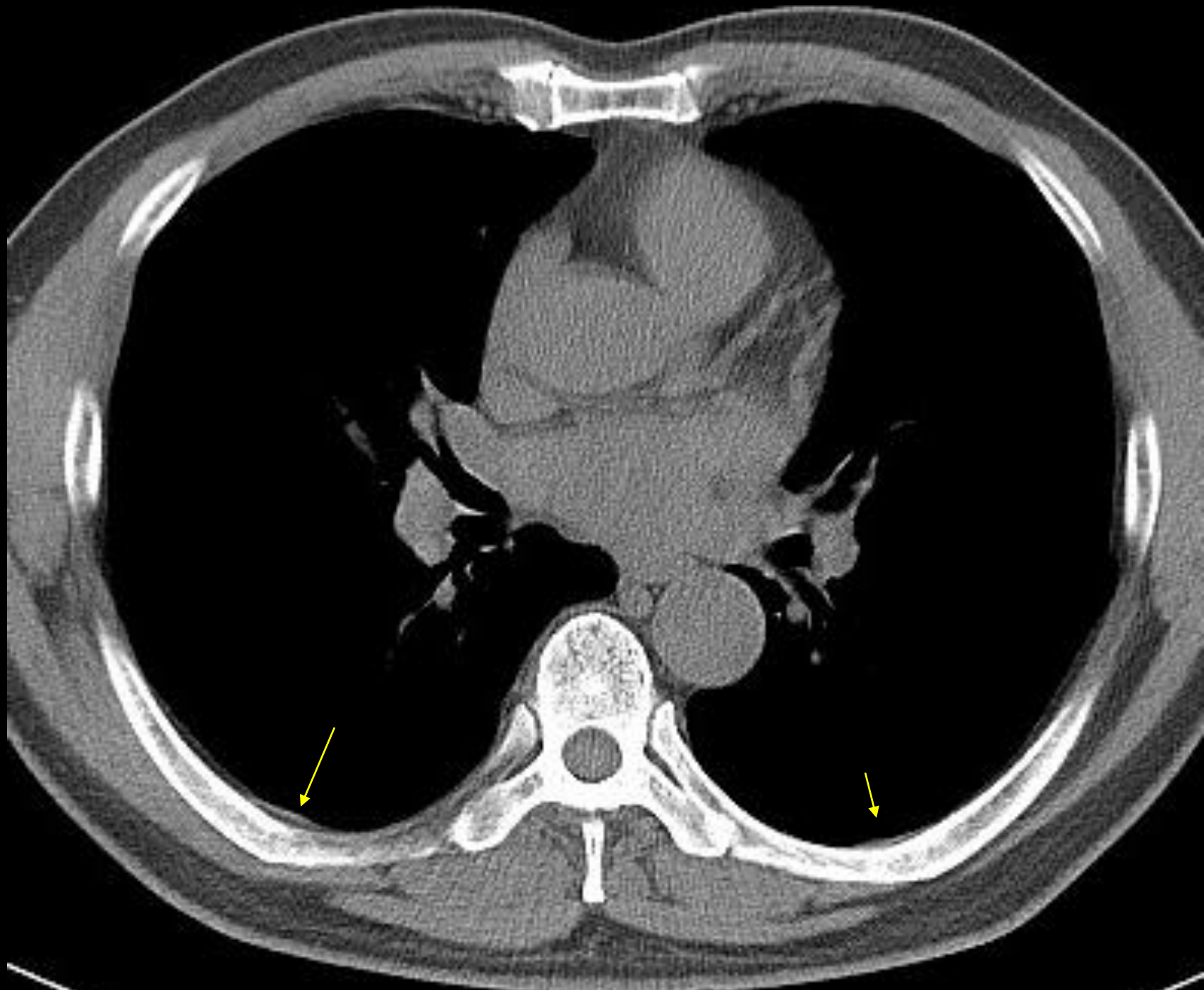






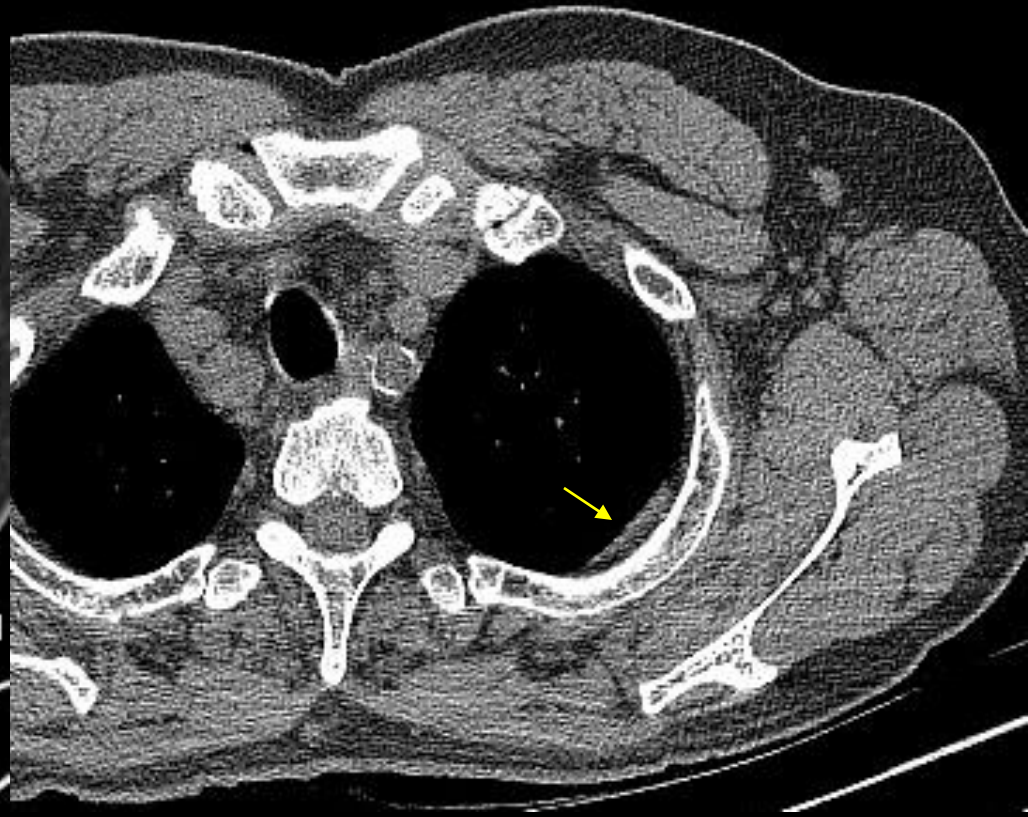
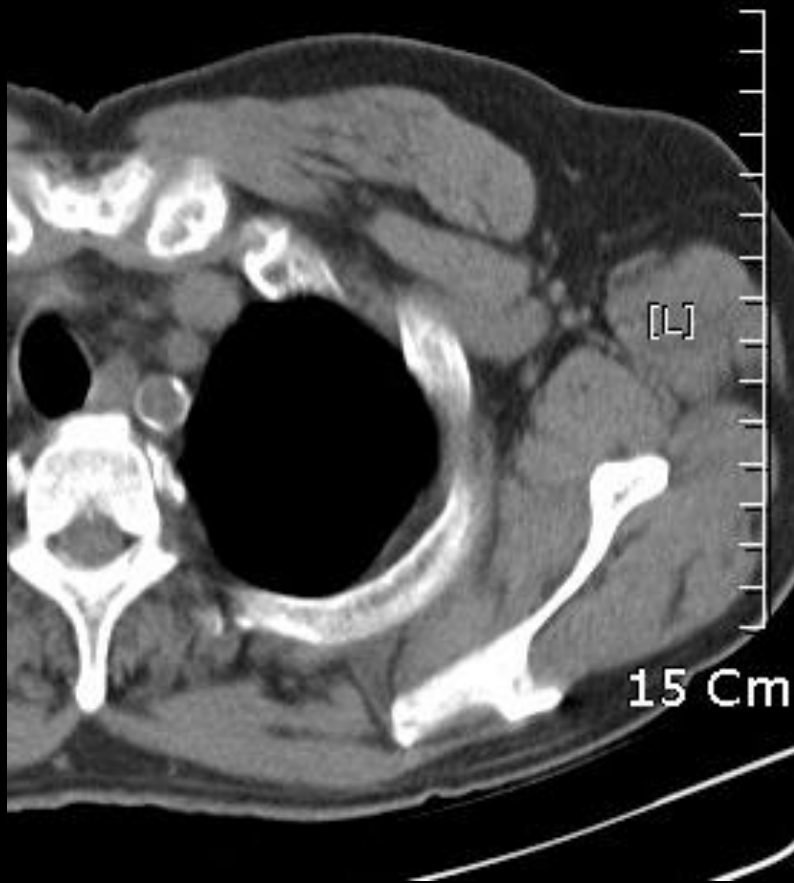




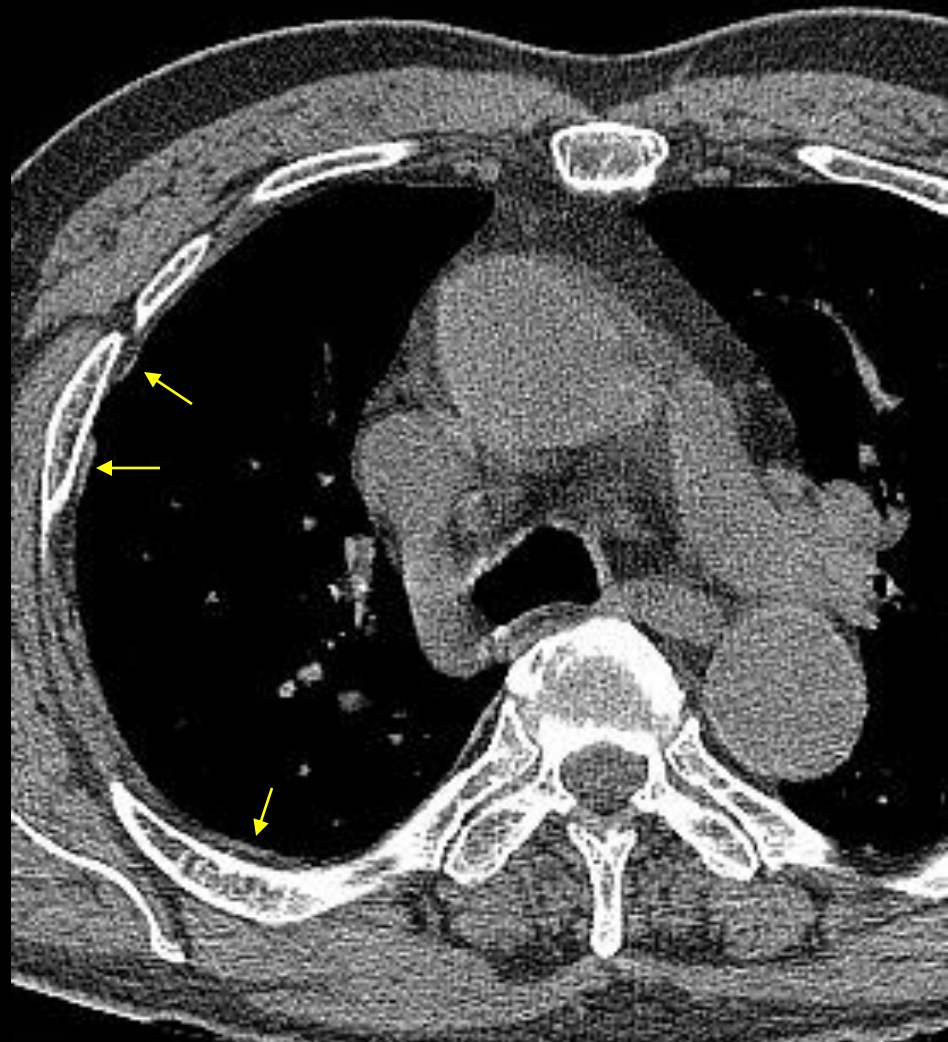
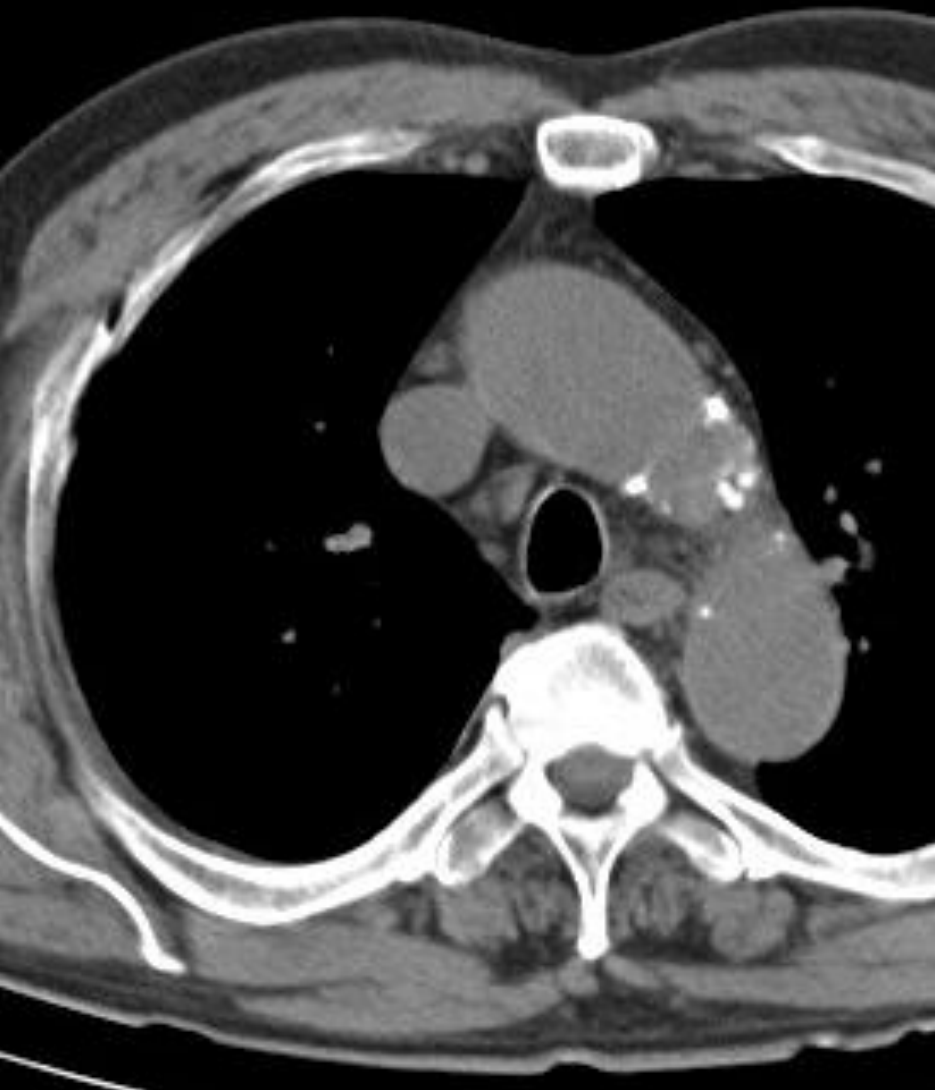


Noncalcified Plaques

Thick-section CT VS HRCT



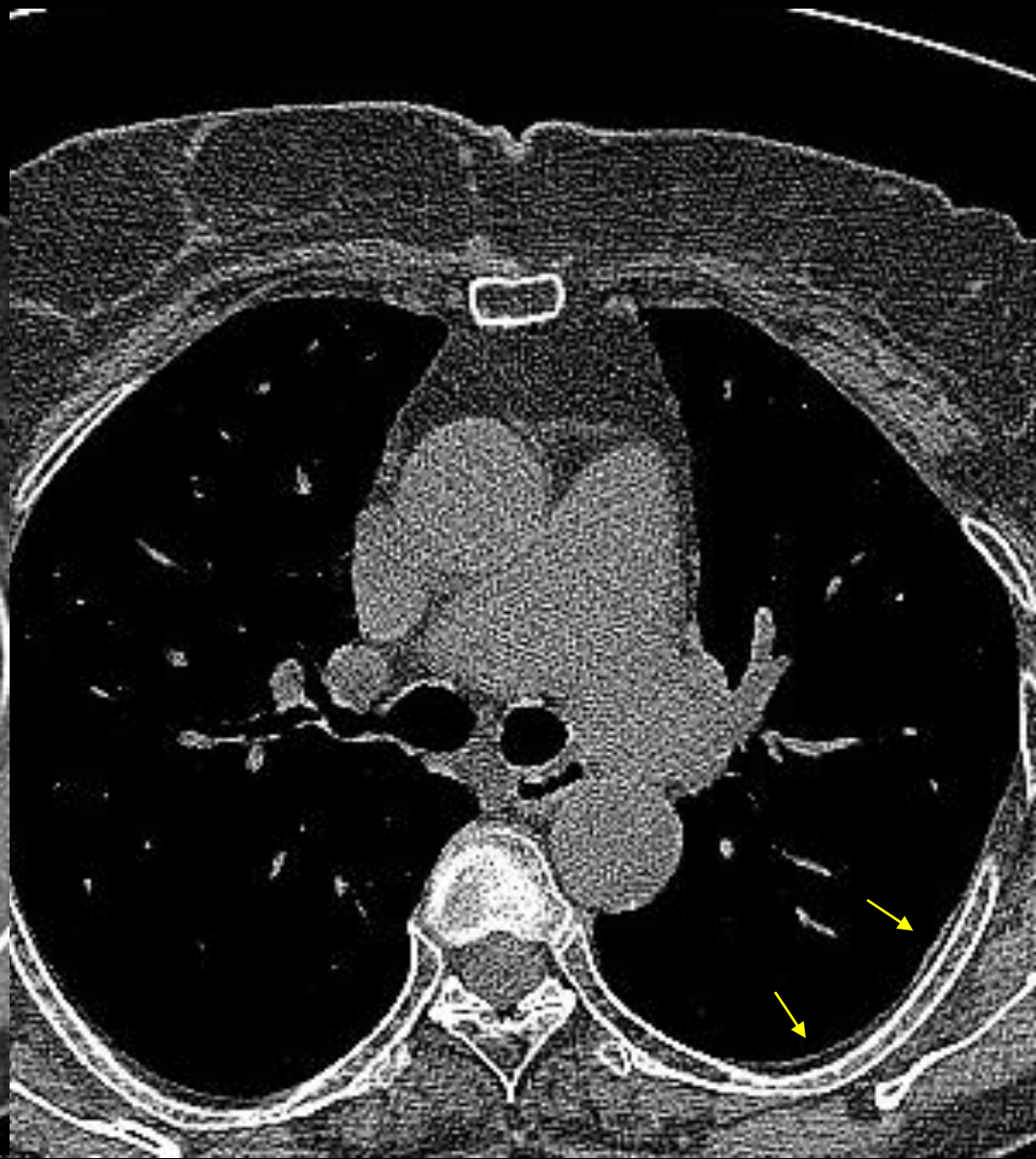
Thick section CT Vs HRCT



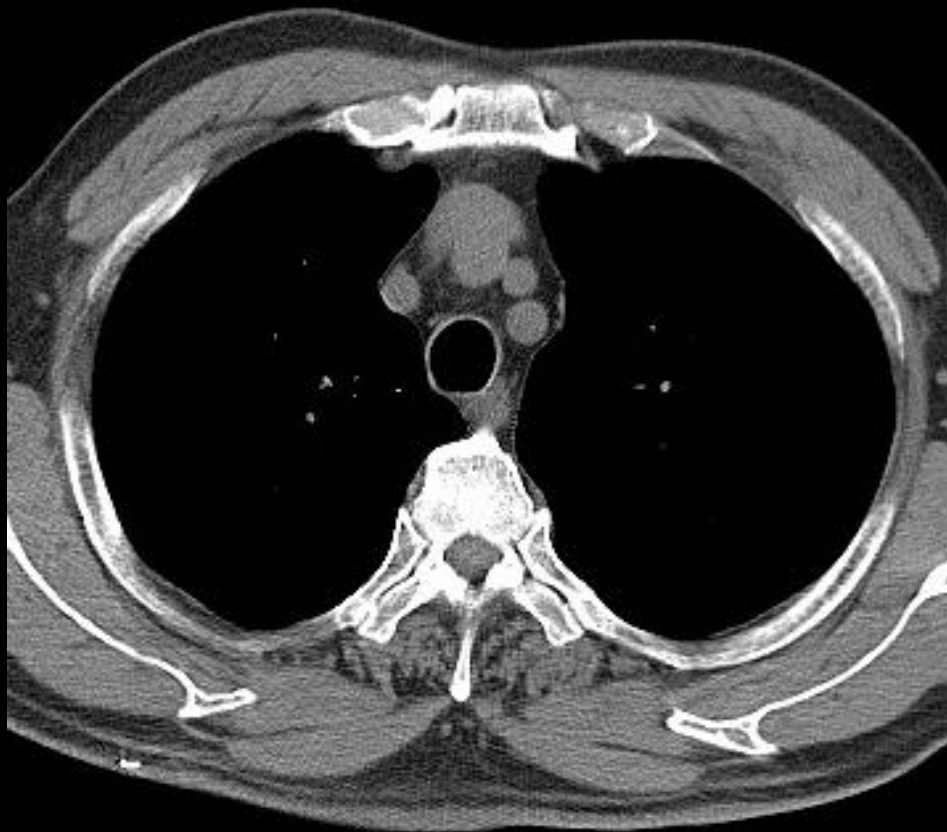
Thick section CT Vs HRCT



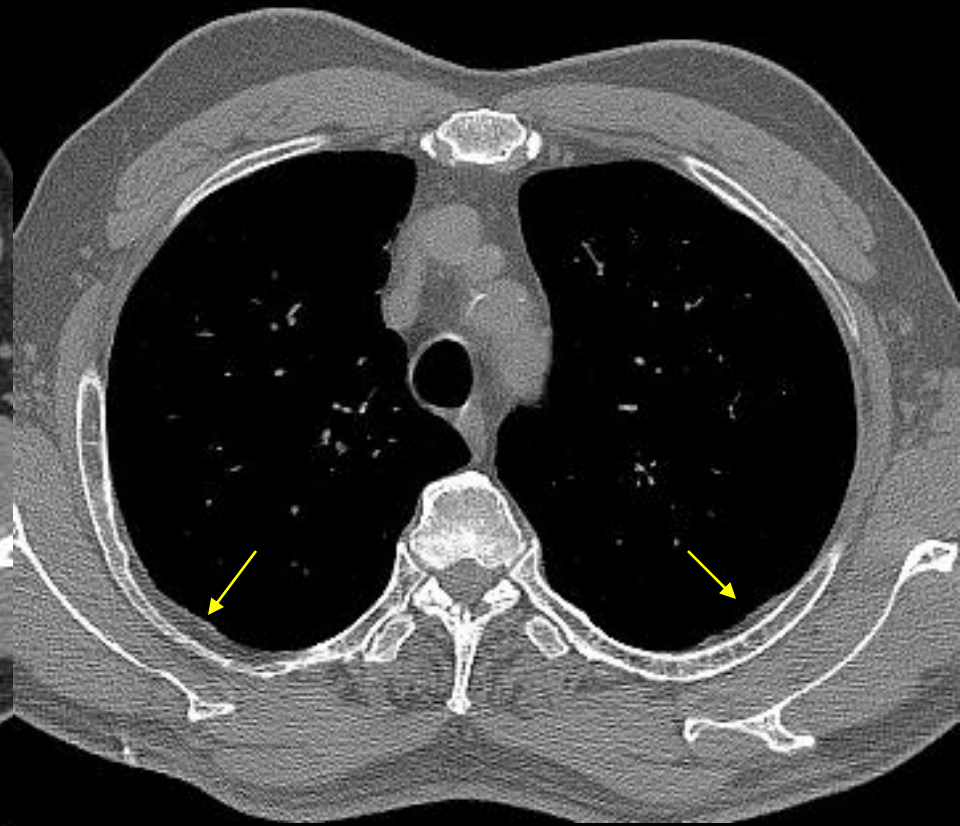
Supine 5 mm slice CT



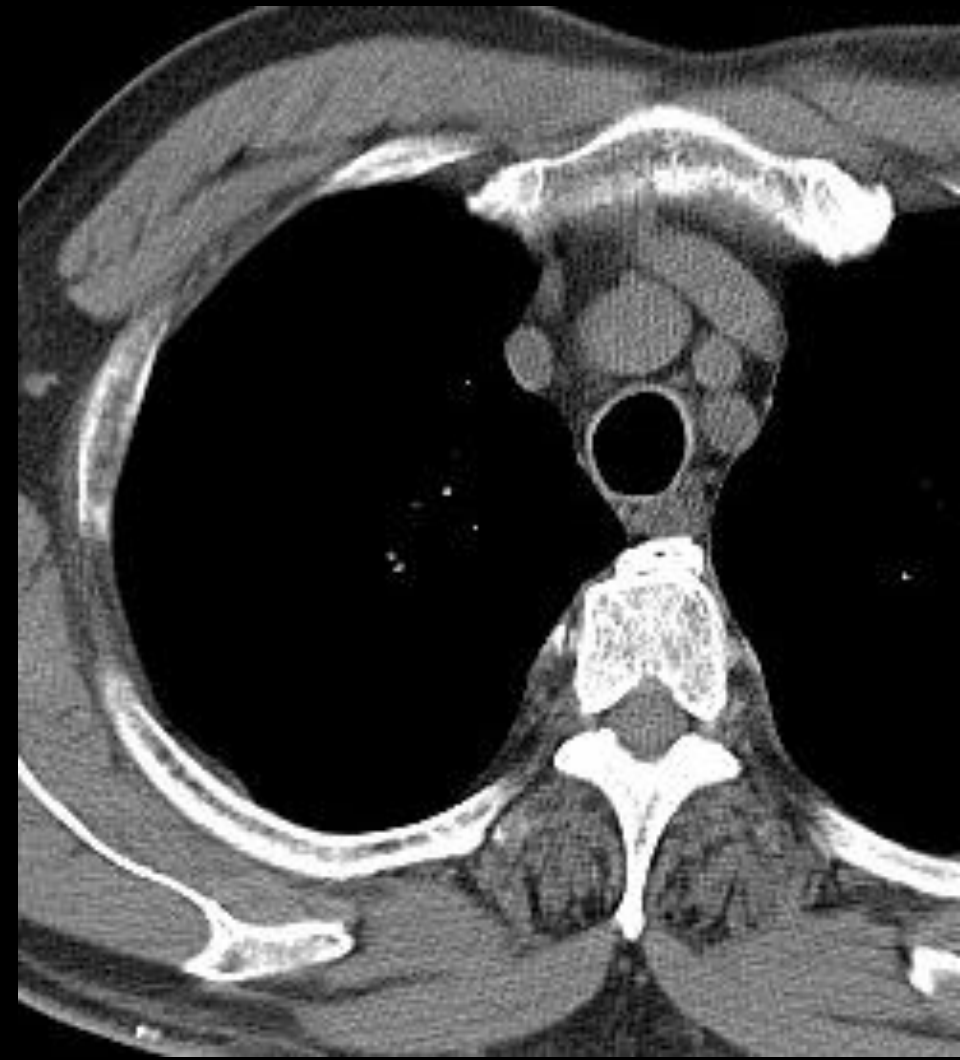
Prone HRCT



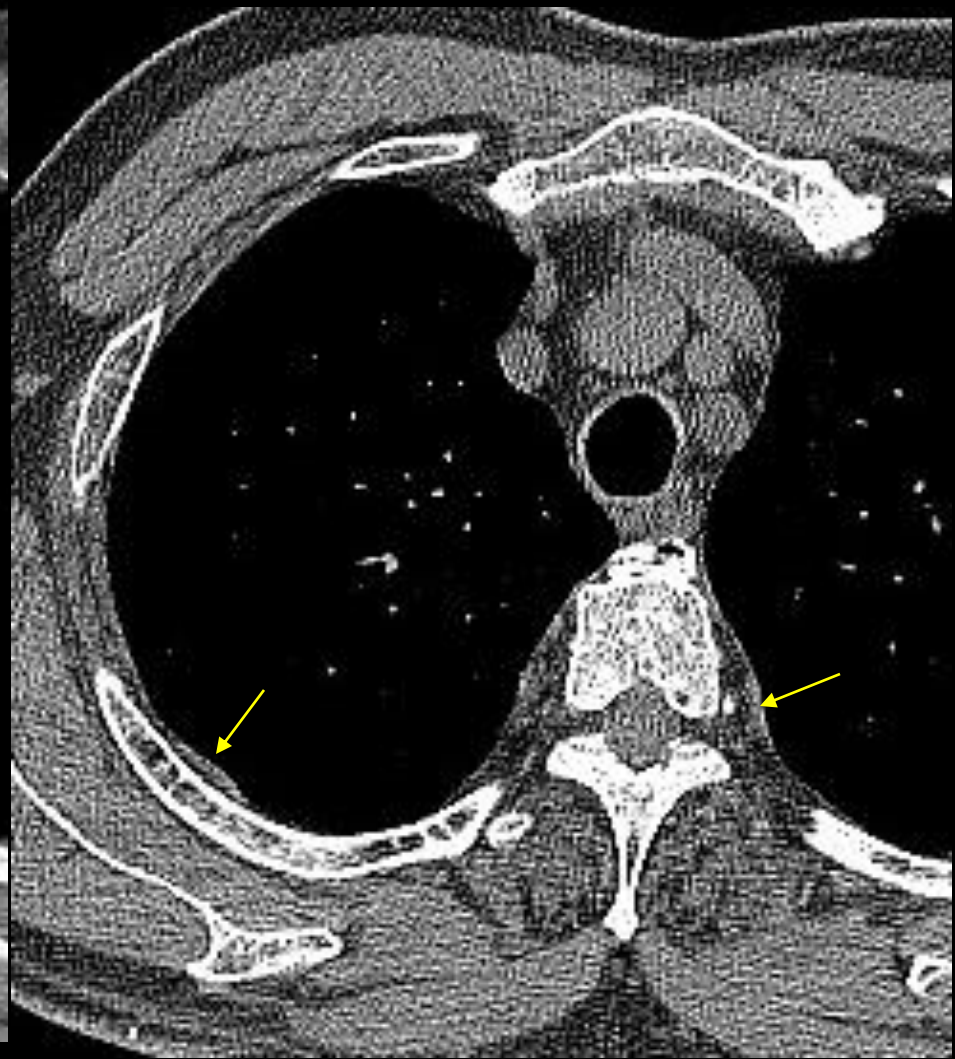
Supine 5 mm slice CT



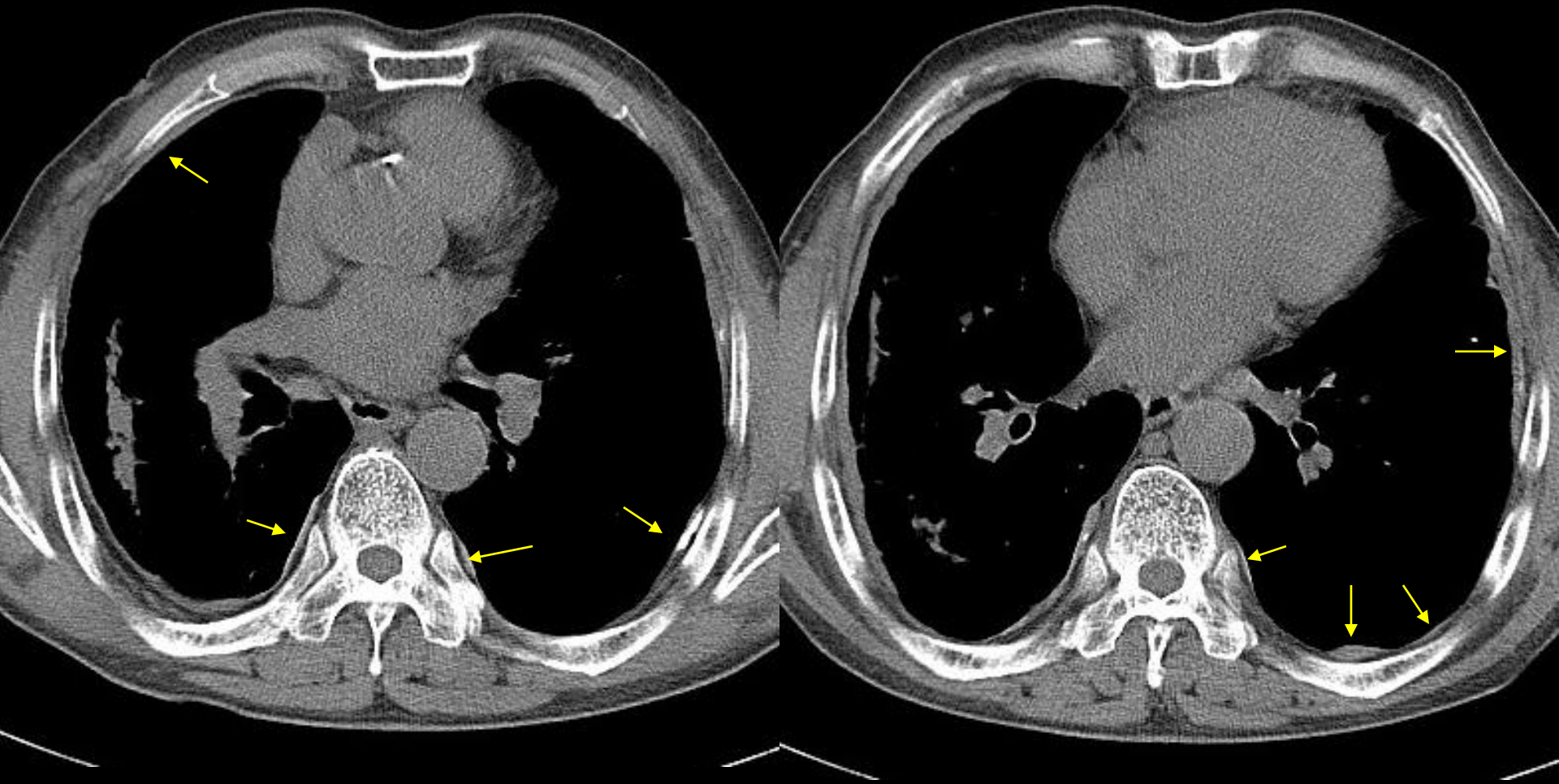
Prone HRCT



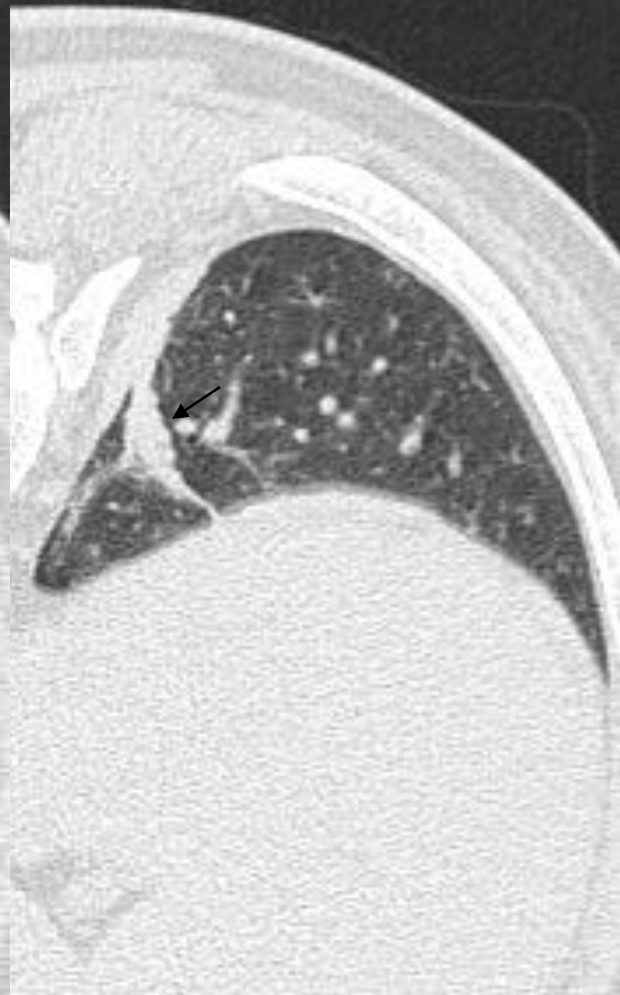
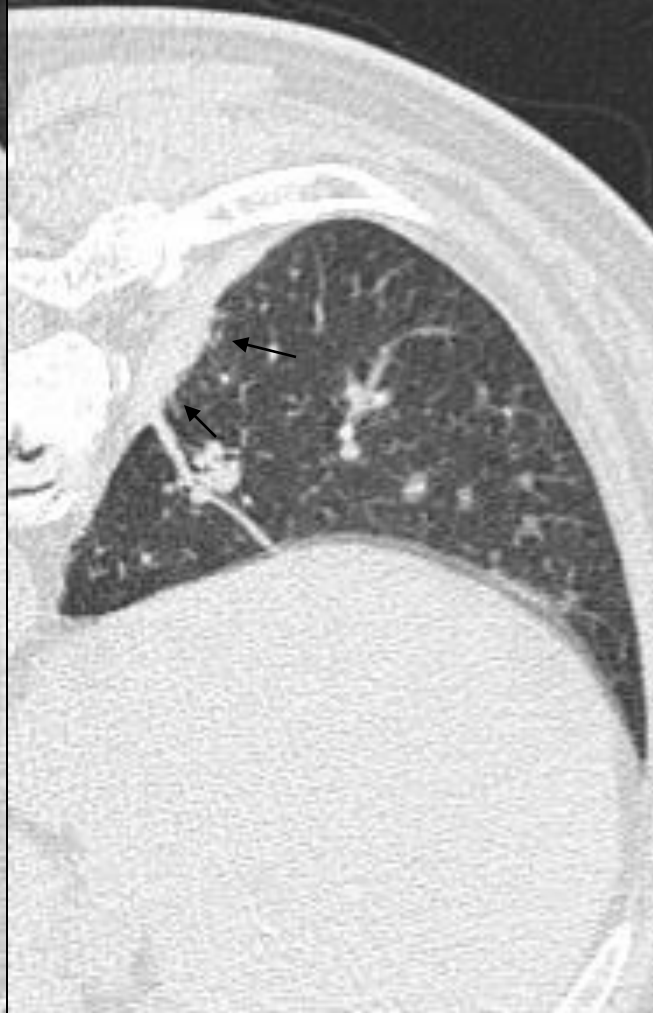
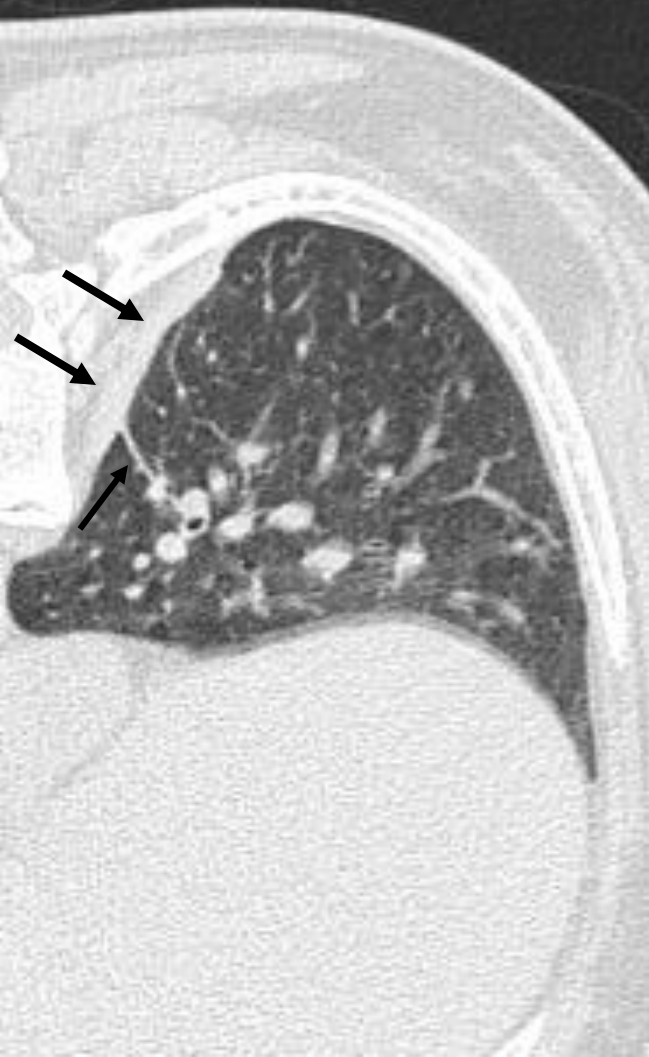
Supine 5 mm slice CT



Supine HRCT



Diffuse pleural thickening (Rt) and Plaques (arrows)



Plaque (large arrow) with
Parenchymal band

Intralobular septal
thickening

Rounded
atelectasis